



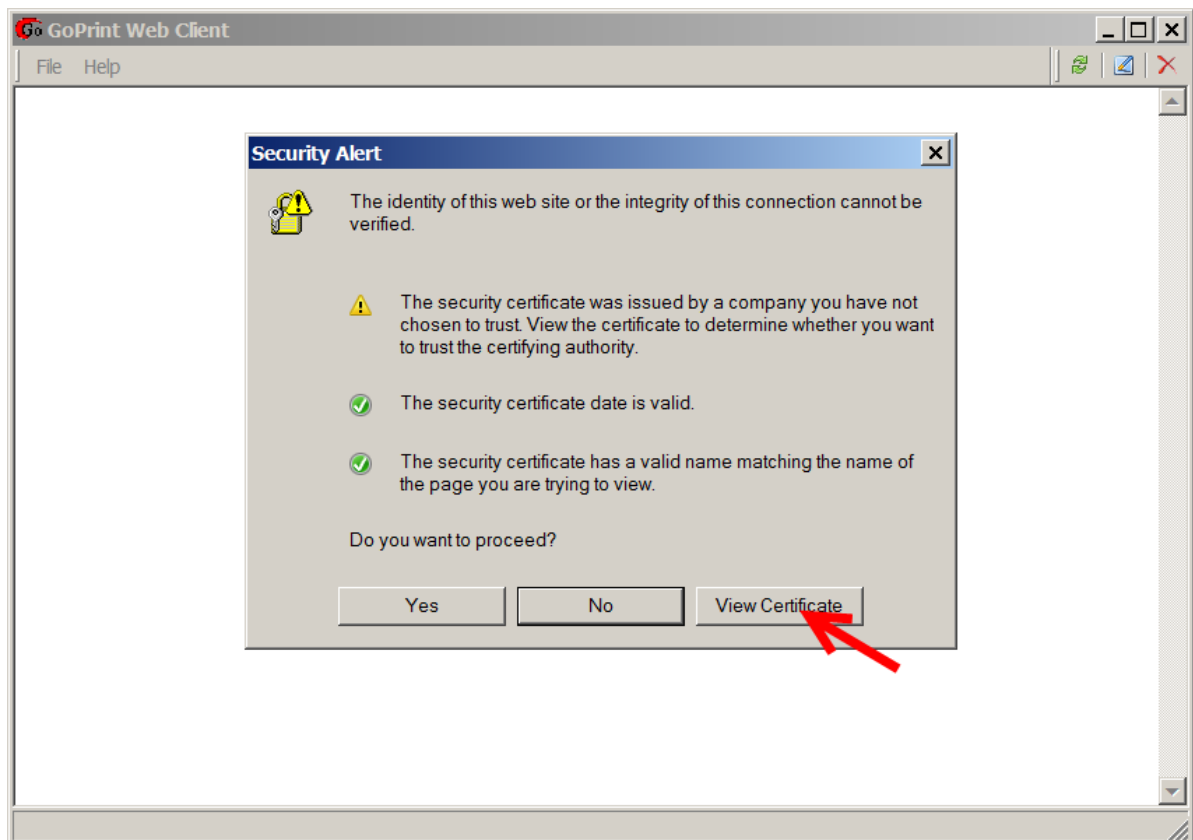
Installing GoPrint's Self-Signed Certificate into Windows Certificate Store

The following two examples walks you through importing GoPrint's self-signed certificate into Windows Certificate Store by importing the certificate on each individually workstation in a workgroup environment and by Group Policy in a domain environment.

Important: the following information is intended as a reference for our clients and is not supported by GoPrint Support. The preferred supported method is to install a registered certificate from a certificate Authority.

Workgroup Environment

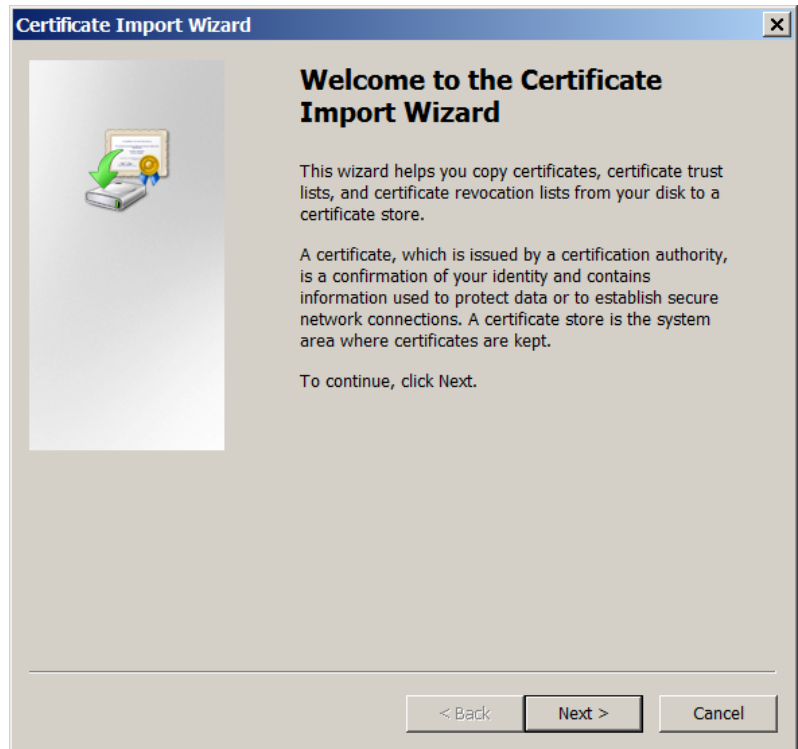
1. Click View Certificate



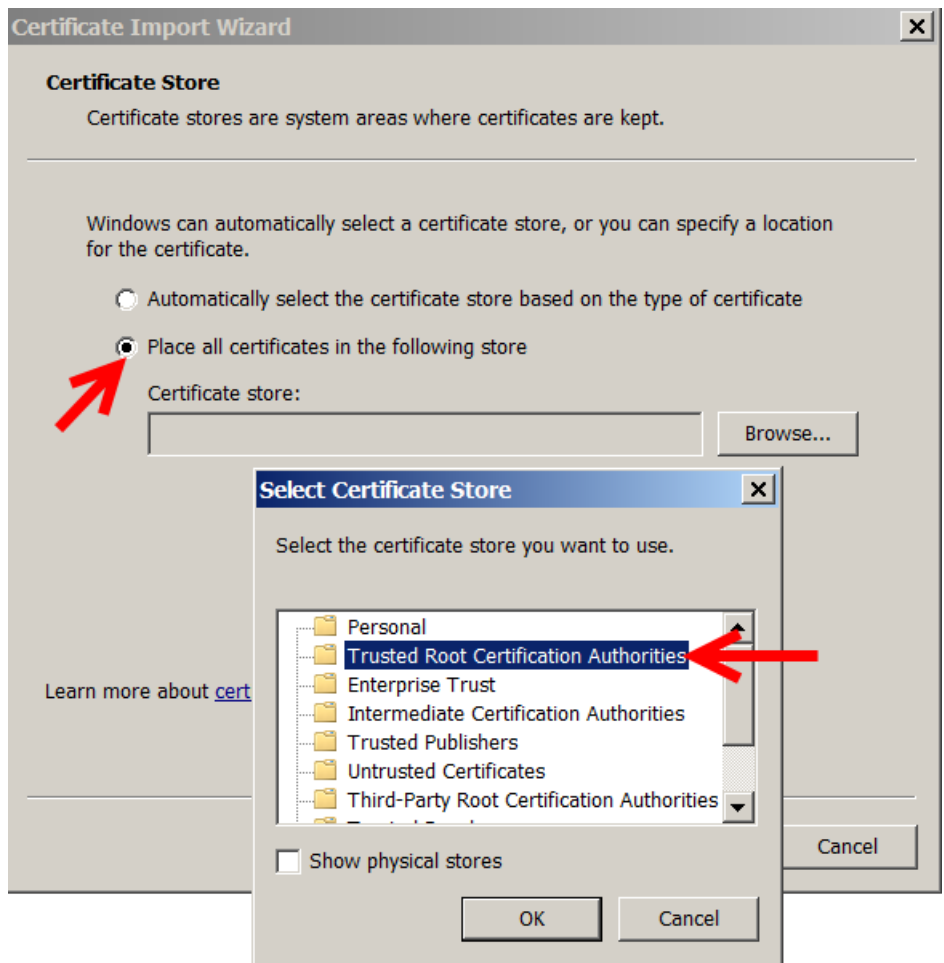
2. Install Certificate



3. Next

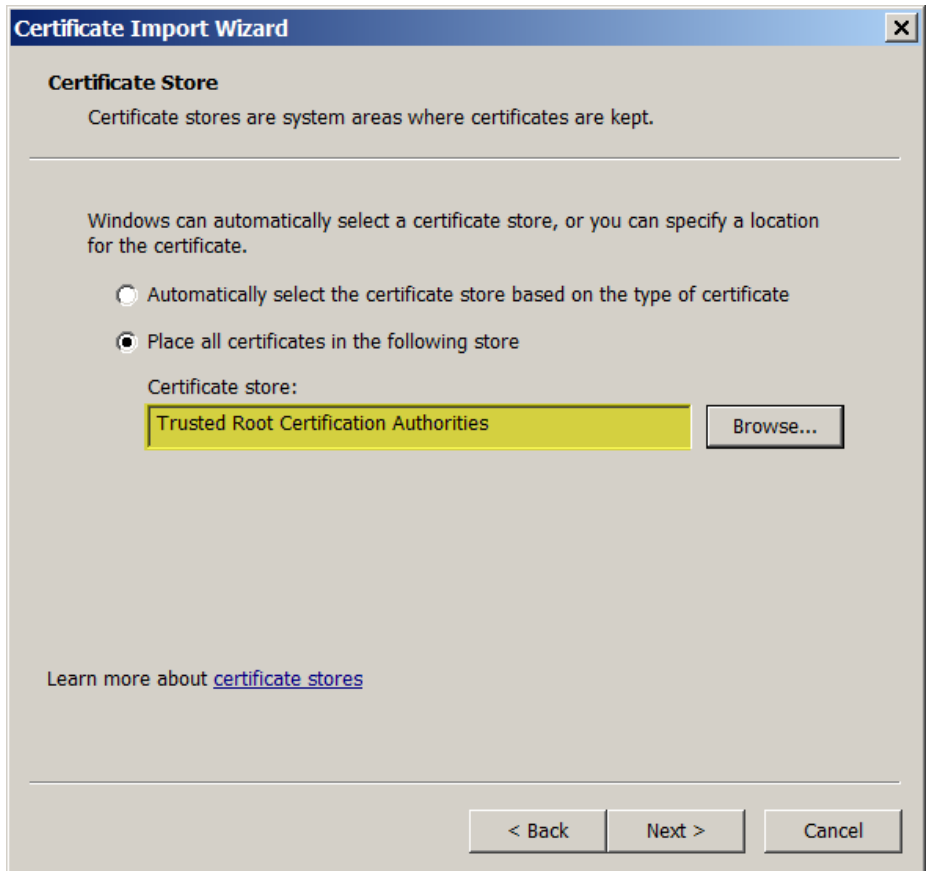


4. Place all Certificates in the following store

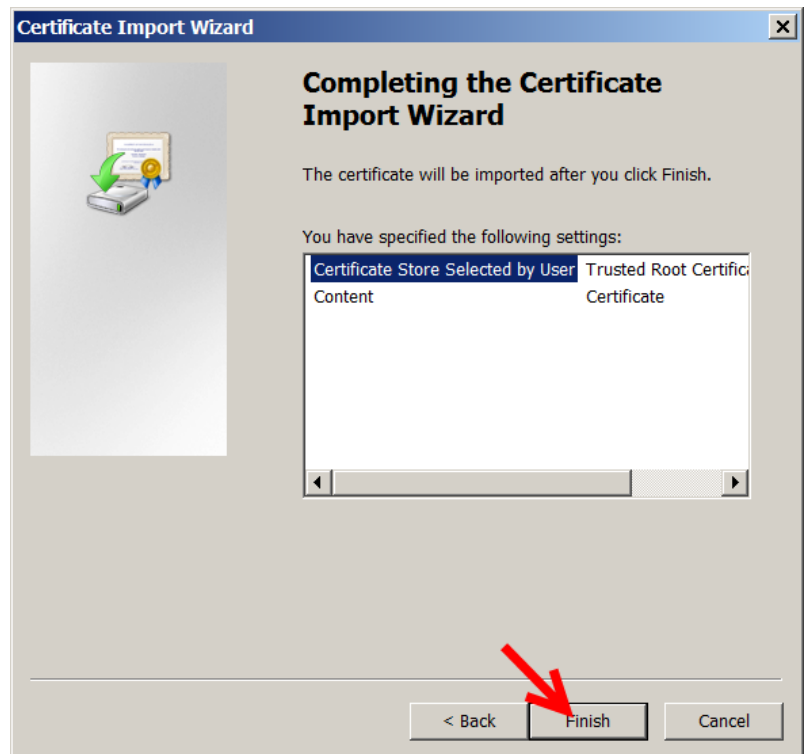


5. Trusted Root Certification Authorities

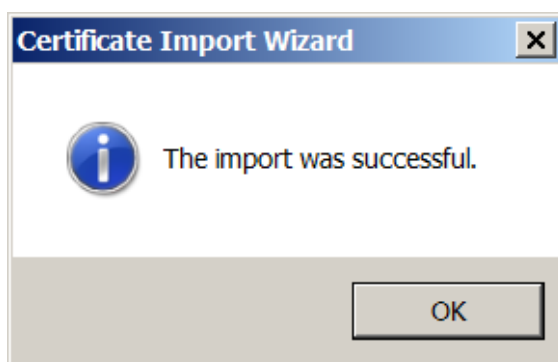
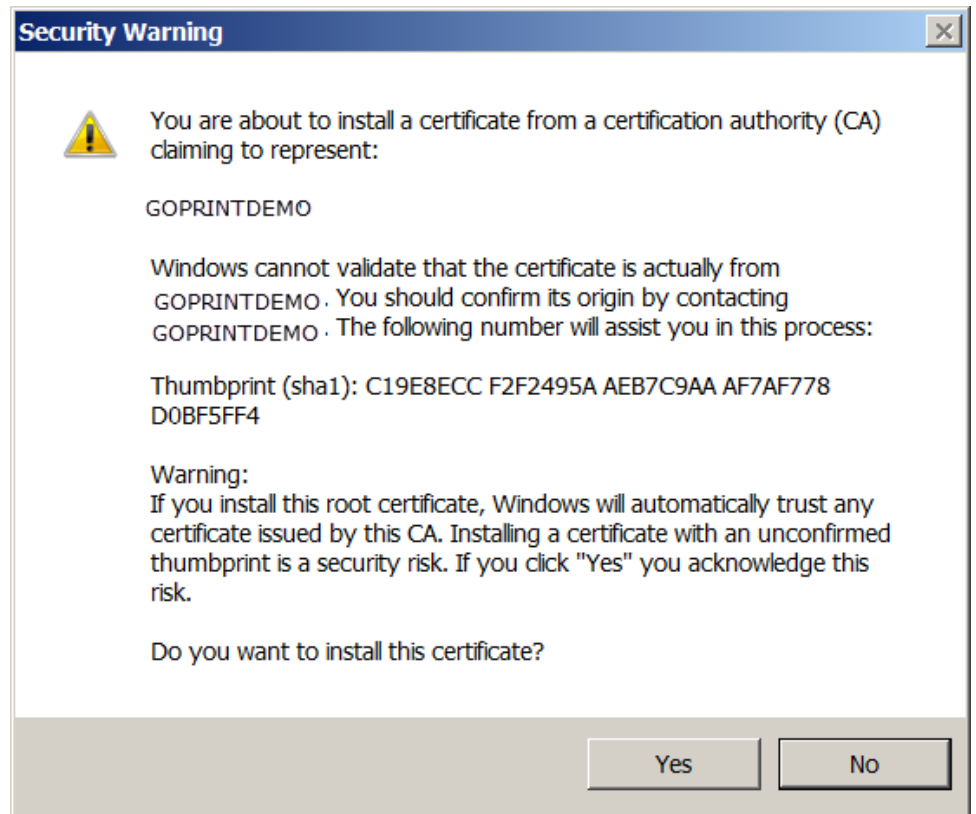
6. Confirm Certificate store



7. Finish



8. Yes to install certificate

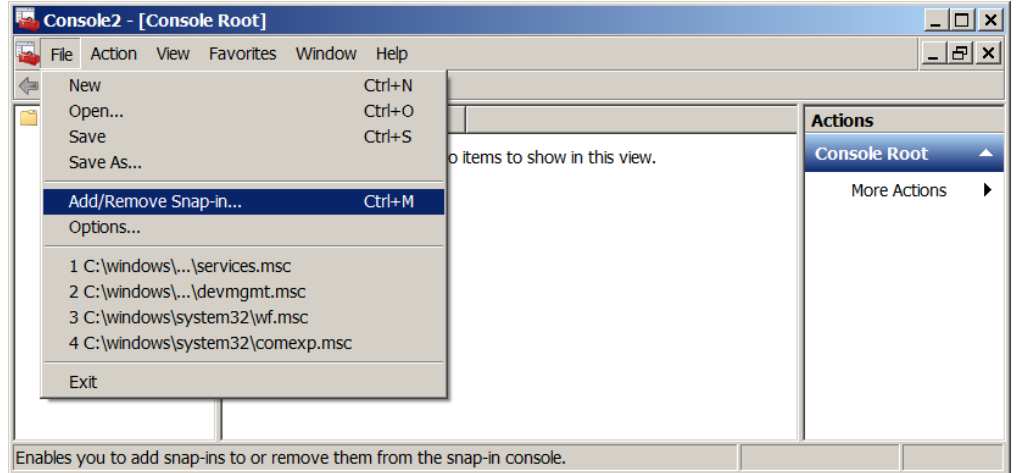




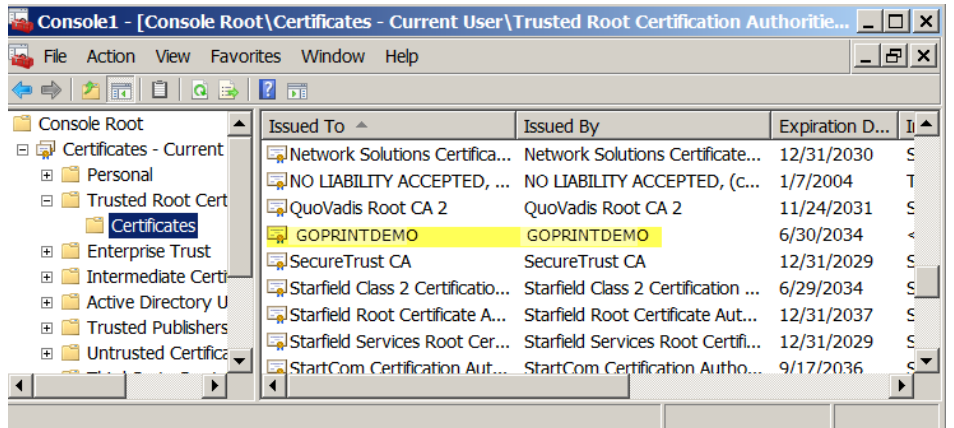
To confirm the certificate was installed, you can open Windows Certificate store from a Microsoft Management Console.

1. Run command type:
mmc

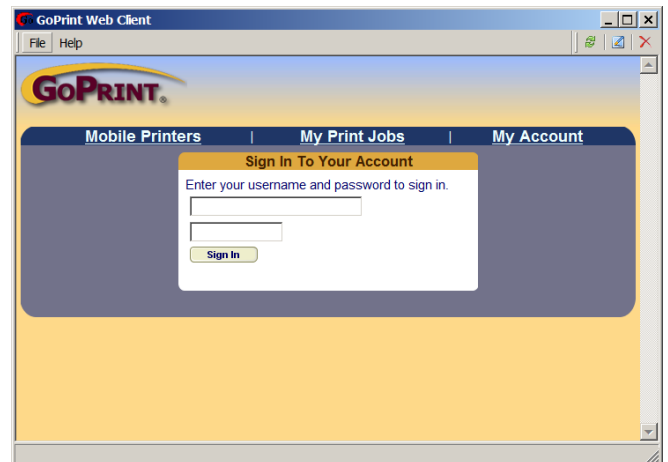
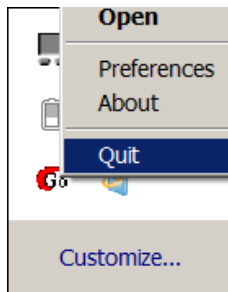
2. New – Add/Remove Snap-in



3. Trusted Root Certificates - Certificates



Stop the Web Client process and restart the Web Client to ensure the security warning doesn't appear!





Installing a Self-Signed Certificate on workstations with Group Policy Using the Group Policy Management Console

1. Log in to your Active Directory server using a domain administrator account
2. Open the Group Policy Management Console
3. Create a new GPO or use an existing one of your choice
4. Right-click the desired Group Policy Object and select "Edit"
5. Go to Computer Configuration -> Policies -> Windows Settings -> Security Settings -Public Key Policies
6. Right-click Trusted Root Certification Authorities, and select "Import"
7. In the Certificate Import Wizard click Next, and in the File to Import page, click Browse and navigate to where your certificate is saved, and double click it
8. With the cert listed in the "File name" click Next
9. Accept the default option, Place all certificates in the following store (Trusted Root Certification Authorities), click Next, and then click Finish and OK
10. Link the GPO to the OU of the systems you want the certificate installed onto

To ensure the Group Policy has propagated to all computers in the domain, open Internet Explorer on a client machine:

1. Open Tools -> Internet Options -> Content -> Certificates
2. Trusted Root Certification Authorities, and make sure your certificate is present.

