



## Moving a GoPrint Database to a New Server

*PostgreSQL Server 8.1 - 9.0*

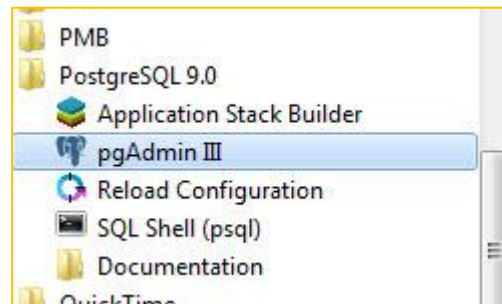
**Overview:** The task involves backing up the existing database, moving it to the new server, then creating a new database and restoring the contents of the back up to the newly created database.

**Important:** Prior to moving the database, a fresh installation of PostgreSQL and the GoPrint software must be installed. Follow the installation instructions in the "GoPrint Windows Server Installation guide"

<http://www.goprintsupport.com/support.html>

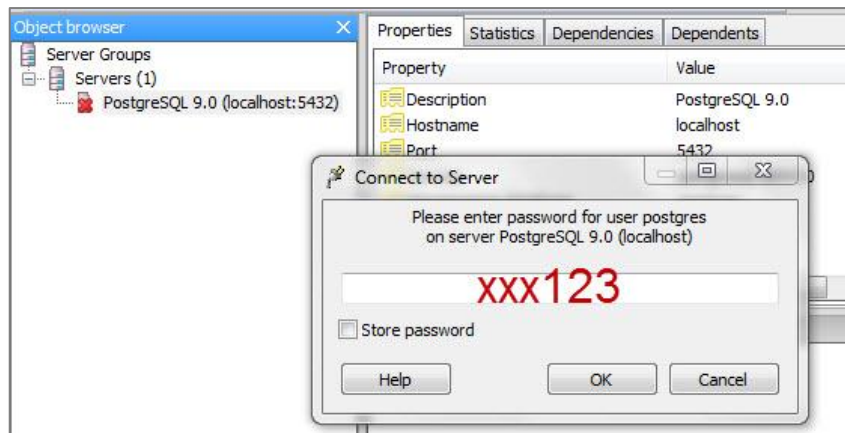
Step 1: Open up PgAdmin III

Programs – PostgreSQL\ver"



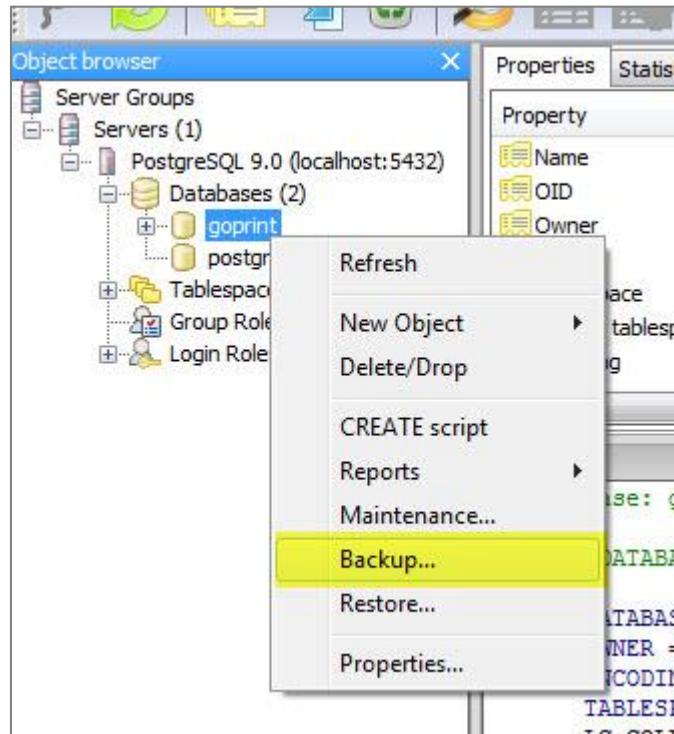
Enter the Postgres user password.

A default GoPrint install uses xxx123



Step 2 – Back up the existing database

Right- click the database and select: **Backup**



The *Back up Database* Dialog box appears:

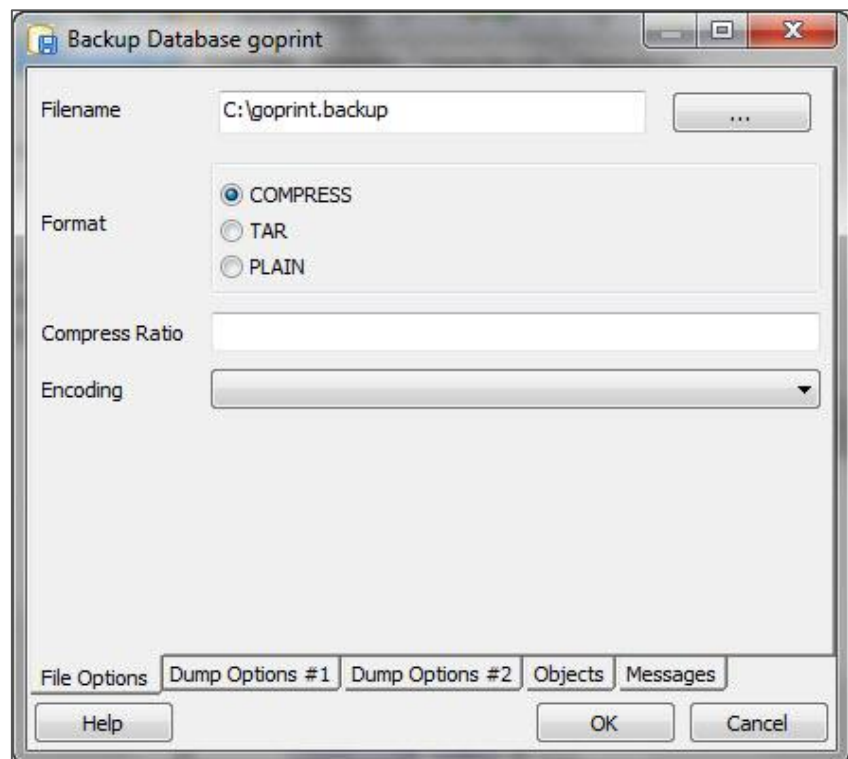
Select:

Filename: name.backup

Select a path and give it a name with a .backup extension.

Format: COMPRESS

Click OK

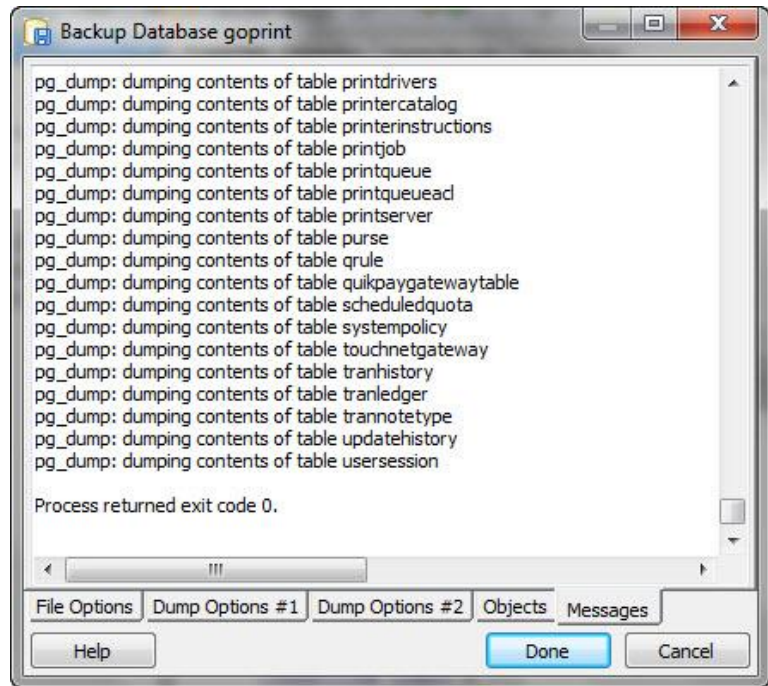




Depending on the size of the database, the backup process may take up to 5-10 minutes to complete.

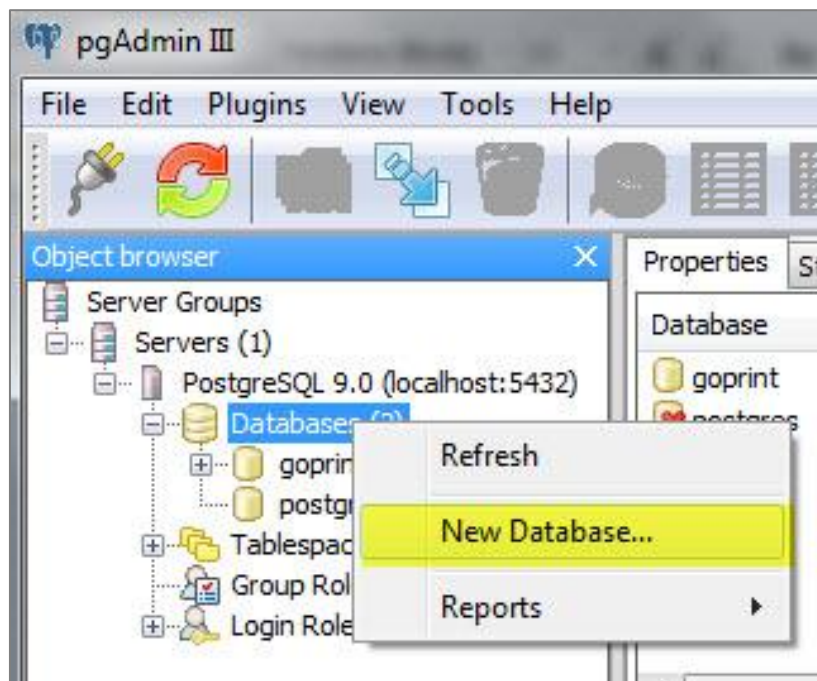
When completed press DONE

Navigate to the directory where the database is saved and copy and paste to the new server.



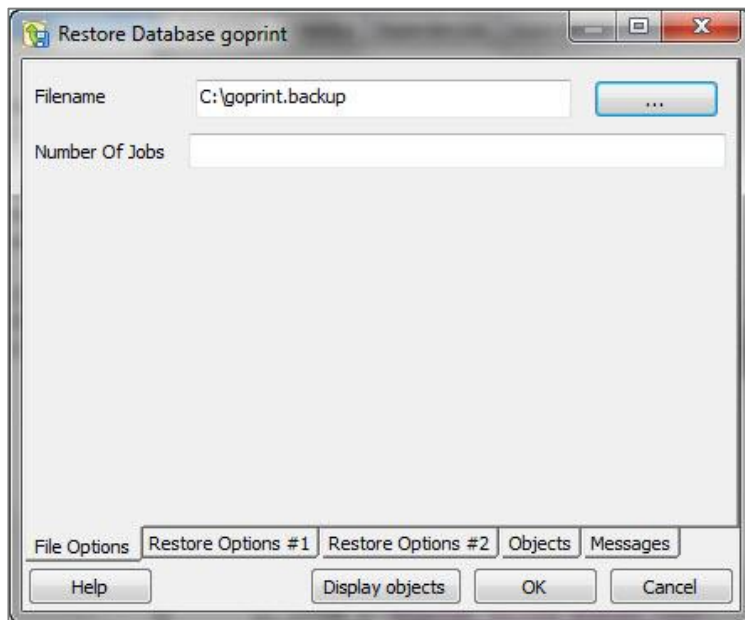
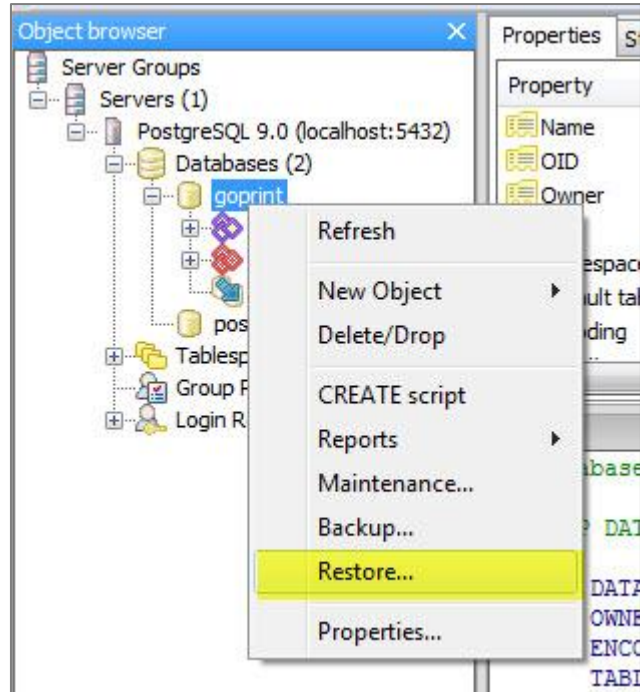
Step 3 - Create a new database on the new server.

Use the **SAME** exact database name as used on the current server.





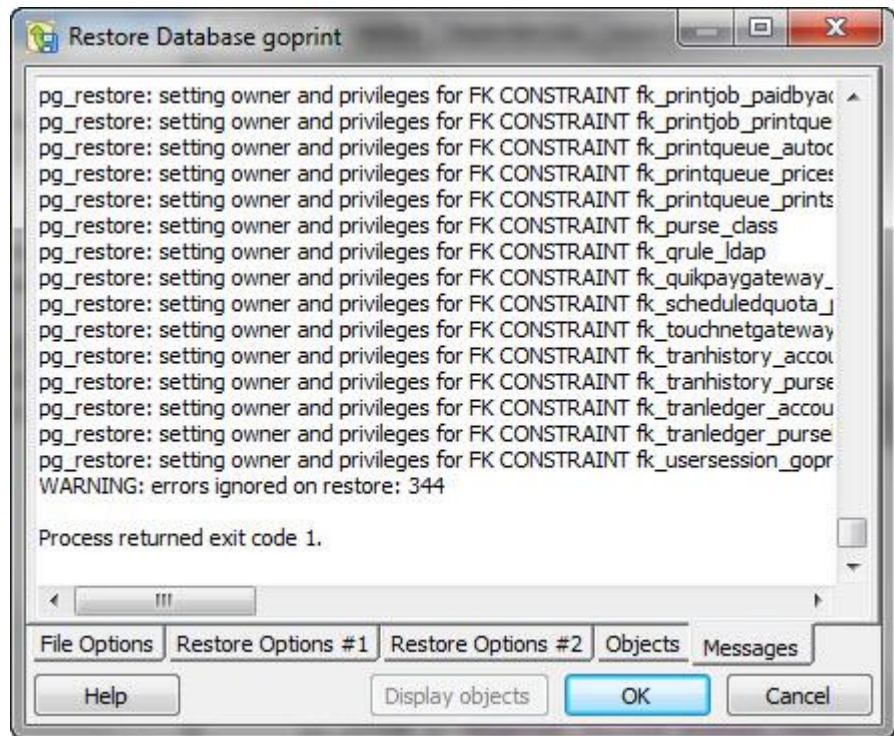
Step 4 - Use the Restore option to restore the back up to the new database



Enter the path to the backup file



**When completed  
click OK**



**The database movement is now complete!**



## GoPrint Configuration

Step 1 - From the GoPrint server, open a browser to: <https://localhost:7767>

Step 2 - Click on **Configure database**

*Make the necessary changes:*

**JDBC Driver:** JDBC PostgreSQL

**Server:** localhost

**Database Name:** should be the same!

**User ID:** postgres

**Password:** should be xxx123

Step 3 – Press Apply

Step 4 – Press Test Connection

A “Connection Successful” message appears!

Configure Database Edit Configuration Services

JDBC Driver JDBC:PostgreSQL

Server localhost

Database Name goprint

User ID postgres

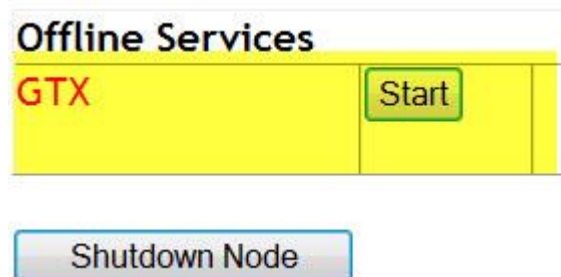
Password

Password is set. Enter a password to reset it.  
Enter a space to reset to a blank password.

Apply Create Database Test Connection

Step 5 - Click on Services from the Node navigation menu

1. Start the GTX service





Once the GTX service appears as running, press the GoPrint Control Center option to bring up the admin login page.

**GoPRINT** Service List

[Configure Database](#) [Edit Configuration](#) **Services** [SSL Certificate](#)

Services on tadraco @ 192.168.0.65

Online Services

<b>GTX</b>	<input type="button" value="Stop"/>	<a href="#">GoPrint Web Client SSL</a> <b><a href="#">GoPrint Control Center</a></b> <a href="#">GoPrint Control Center SSL</a>
------------	-------------------------------------	---

Once logged in, review the system configuration to ensure all items have been restored from backup.

## Troubleshooting

### Connection fails

1. If login failure, check the postgres user password. If the recommended password xxx123 wasn't used when prompted during the PostgreSQL installation then replace with the password created. If unknown, navigate to Microsoft Users and Groups and change the password for the user postgres.
2. Navigate to MS Services and see if the PostgreSQL server service is running. If not, contact GoPrint technical support for assistance.