



MINI TRANSACTION TILL - ENCODER

User Manual

February 2009





GOPRINT MINI-TRANSACTION TILL

Table of Contents

SALES AND SERVICE 3

QUICK REFERENCE4

INTRODUCTION 5

 OPERATOR LOGIN..... 5

 ADD, REFUND, DEBIT CARDS5

 FLAG CARD HANDLING6

COMMAND MODE OVERVIEW 7

 SETUP 10

 TERMINAL SETUP10

APPLICATION SETUP MODE (FOR RECEIPT PRINTERS) 13

OPERATOR SETUP MODE.....17

 AUTO ENCODE FUNCTION 6

SERVICE MODE (LOGS & TRANSACTION METERS) 20

 PRINT METERS..... 22

 CLEAR TRANSACTION LOG24

ENCODE CASH COMMAND CARD 25

ERROR MESSAGES 25

CABLES 29



Sales and Service

At GoPrint, complete customer satisfaction is our number one goal. As such, customer support is readily available to satisfy any need you may have. Whether it's sales information, a service requirement or just general inquiry, you can be assured of a prompt response to your need(s).

SALES

If you are a new or existing customer with a new installation in mind, our highly qualified sales staff can custom tailor a product solution for "your" particular needs. Simply telephone GoPrint in the United States at 1-888-52-PRINT and ask for sales assistance. You may also email us at sales@goprint.com

UNITED STATES

GoPrint Systems, Inc.
One Annabel Lane, Suite 105
San Ramon, CA 94583

Tel: 1-888-52-PRINT
Fax: 1-925-790-0071

SERVICE

If you require technical assistance advice or parts please contact our support department at 1-888-52-PRINT ext. 30 or email us at support@goprint.com

Repairs in the should be sent to:

GoPrint Systems, Inc.
One Annabel Lane, Suite 105
San Ramon, CA 94583

Tel: 1-888-52-PRINT ext. 30
Fax: 1-925-790-0071

Please visit us at - <http://www.goprint.com>



Quick Reference Guide

Initial Programming:

- At the operator prompt, log into administrative features by entering D-9-5-1-ENT
- Select Command Mode by hitting ENT (or up/down with A, B keys.)
- Enter Password 1-5-3-5

***Press ENT to select or save, CLR to take you to the next menu or cancel, A/B to arrow up/down

Key Features to program in Command Mode:

- Terminal Setup → ENT → Show # Decimal Pt → Should read 2 (CLR)
- Card Setup → ENT → STX → Should Read 12
- Card Setup → ENT → ROM → Should Read 6
- Card Setup → ENT → Site 1 → Should be specific customer Site Code
- When finished Continue to Hit clear until you get to the main screen (Enter Operator)

Encoding Cards – Operator Log-in

There are 8 separate operators able to use the Encoder. If you wish to have record keeping ability, you can assign each person a separate Operator Number. This will help you determine who made the additions/subtractions on cards.

- Log into the unit by keying in your Operator Number (1-8), Press Enter
- Enter Your unique Password. Default is 1111 for Operator 1, 2222 for Operator 2, 3333 for operator 3 etc. (you can change the password from default if you wish – but cannot recover lost passwords).

KEY-

A= Add
B = Refund Card Balance
D = Debit/Subtract from Balance

At this point you are able to begin encoding cards. You can:

- Insert user's card you wish to add value/subtract value, press A to add, and then enter the amount. Card will eject when finished
- Insert single blank card → This will lay down the track and encode with Site code and \$0 balance, press eject button to return
- Mass Encoding of blank cards – insert Grey, Encode Cash Card (given with original installation packet).
 - Enter the value you wish to do mass encoding (this will display to the tenth of a cent)
 - Press Enter
 - Begin Entering User Cards
 - Press Clear when finished

Operator Log-Out

When all cards are ejected, press CLR, then confirm the logoff by pressing D.

In activity in a given period of time, will automatically logoff the Operator.



INTRODUCTION

Before operating the MiniTill/Encoder in Legacy mode it will have to be set up properly for the card format and characteristics it is intended to work with. Refer to the section "Setup through Command Mode" for details.

To encode cash or Units cards optional Encode cards will be required. There are other optional command cards that perform some service functions. Refer to the Section "Legacy Command Cards and Use" for details. These Encode and Command cards are available for purchase from GoPrint Systems. Contact your sales representative for details.

Power Up / Initialization

Upon application of power the MiniTill/Encoder will initialize itself and display :“M1535 Version” “#.##.##” for a short time.

After initializing the MiniTill will enter the Idle mode and display:

Enter Operator
to Login

At this stage an operator can login via the keypad to use the MiniTill or initiate command modes to setup the unit.

Operator Login

- To Login the Operator first enters an operator number (1-8) followed by <ENT>
- When prompted the Login PIN is entered followed by <ENT>.
(The Operators' PIN and Access are set-up in command mode: Operator Setup)

Enter Operator
to Login

Operator #
Password

While an operator is logged in the MiniTill waits for a card to be inserted

Please Insert
Card

When a valid card is inserted its balance is displayed in Cash or Units

Purse1: \$ ##.##
Press A B or D

Purse1: #####
Press A B or D

Add, Refund, Debit the Card Balance

Depending upon the Operator's Authorization level:

<A> is Pressed to Add to the card balance (Taxes are not applied)

Balance\$ ##.##
Add\$ ##.##

Purse1: #####
Add #####

Type value followed by <ENT>
CLR will clear value & cancel

 is Pressed to Refund to the card balance (Taxes, if Set, are applied)

Balance\$ ##.##
Refund\$ ##.##

Purse1: #####
Refund #####

type value followed by <ENT>
CLR will clear value & Cancel



Multiple Refunds may be made during a single transaction. After applying the last refund press ENT to end the transaction, write the new balance and return the card

<D> is Pressed to Debit from the card balance (Taxes, if Set, are applied)

Balance\$ ##.##
Debit \$ ##.##

Purse1: #####
Debit #####

type value followed by <ENT>
CLR will clear value & Cancel

Multiple Debits may be made during a single transaction. After applying the last refund press ENT to end the transaction, write the new balance and return the card

Transaction Receipts

If a receipt printer is attached and set-up in Command Mode: MiniTill Setup a receipt will be printed after the card is ejected at the end of the Transaction.

Printing Receipt

Pressing C before inserting the next card will print a copy of the last receipt unless a new operator has logged in or the power to the MiniTill was reset.

Flagged card Handling

If the card inserted is Flagged, and the Operator's Authorization level allows unflagging of cards the operator can press A to remove the flag from the card.

Card Flagged
A to Unflag

Pressing any other key will cause the card to be ejected without removing the flag

If the Operator does not have Authorization to unflag cards or the unflag option is turned off in Command mode: MiniTill Setup the flagged card will be immediately rejected.

Flagged Card

Operator Logoff

Please Insert
reader
Card

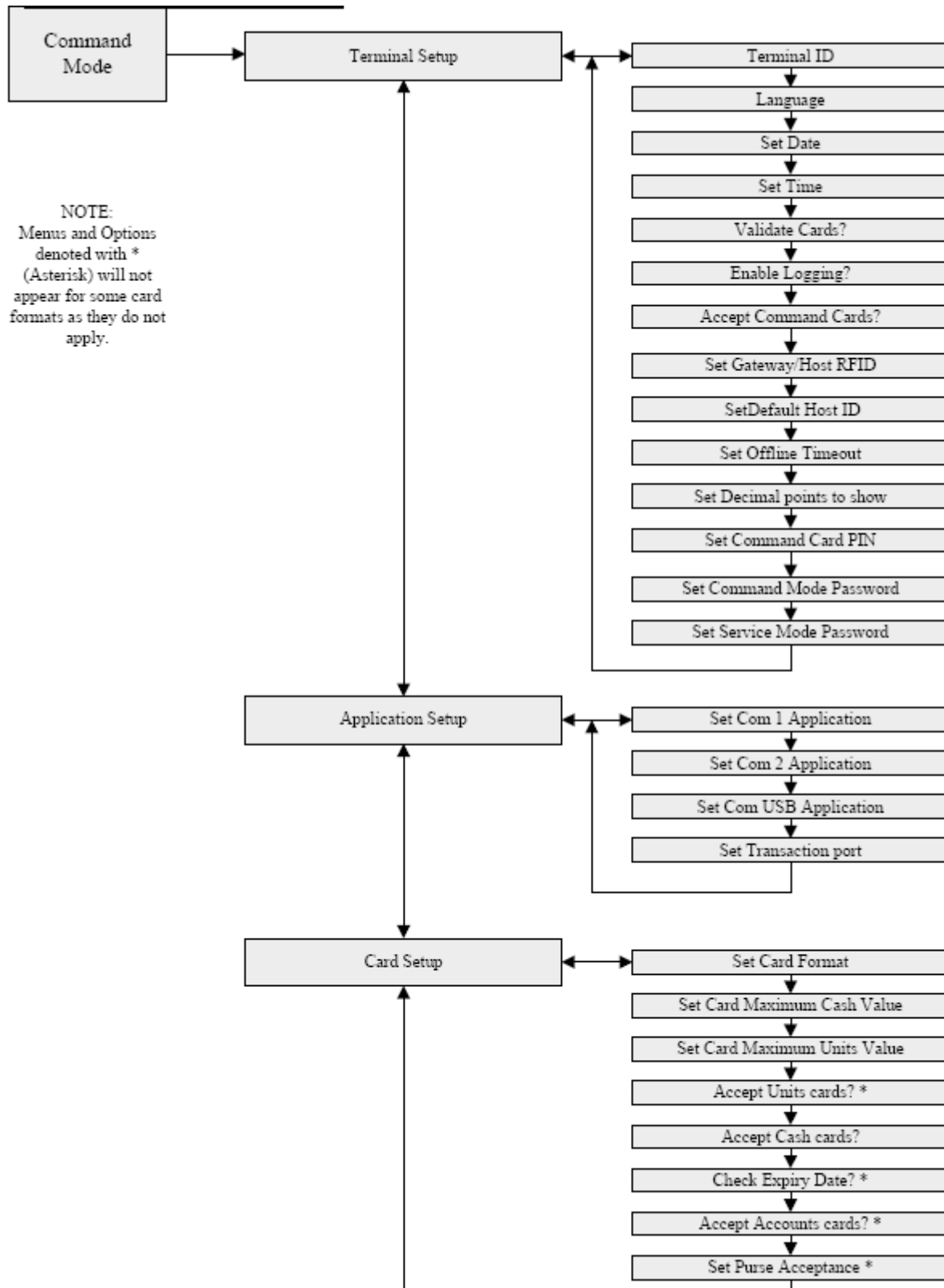
To logoff the operator presses <CLR> while there is no card in the

Log off ?
D=Yes CLR=No

Confirm the desire to logoff by pressing <D>

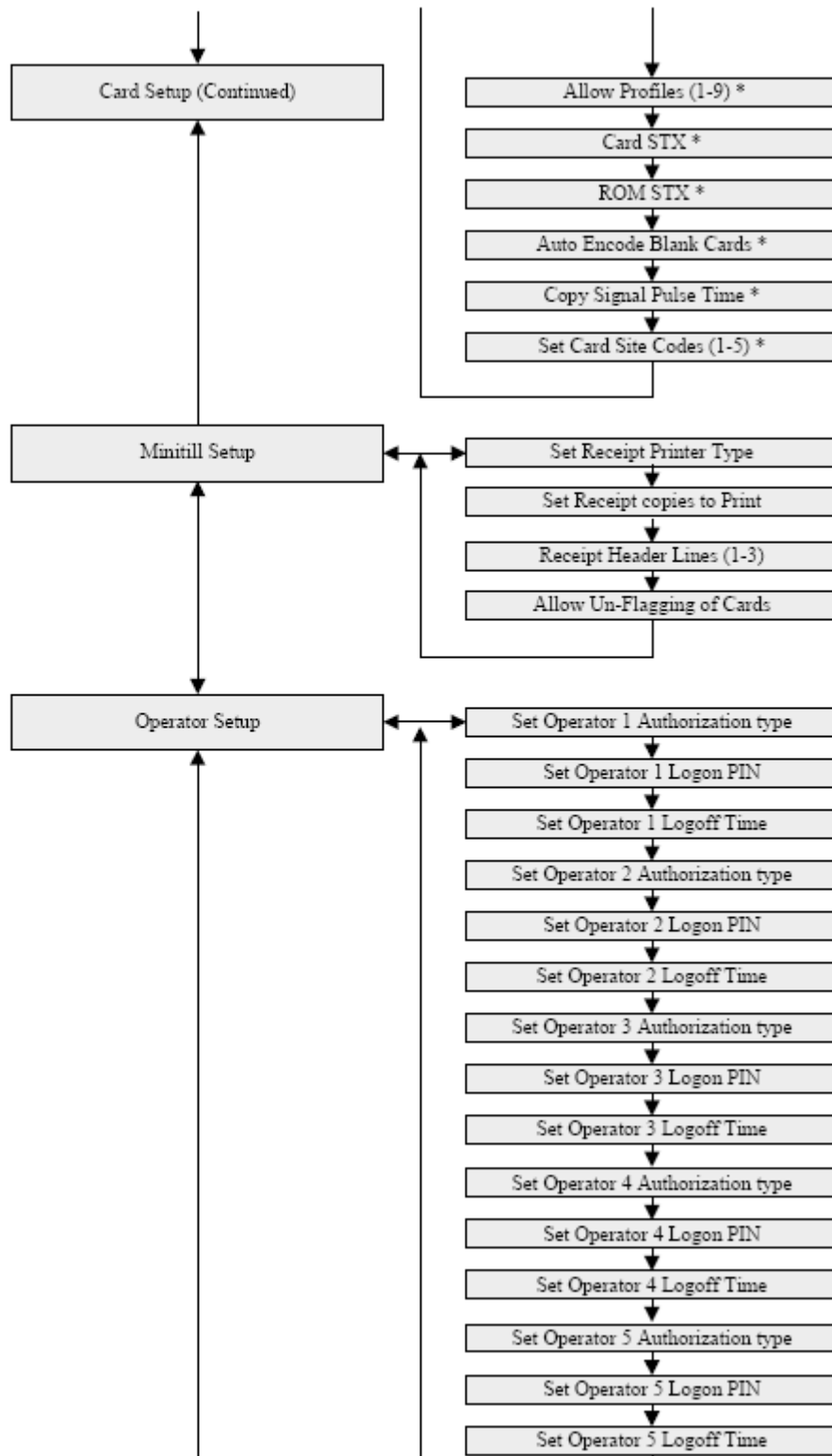
Once the Auto logoff time has expired (from the time the operator Logged on) the MiniTill will automatically log the operator off (unless he is in the middle of a transaction). Auto Logoff time is set for each Operator in command mode: Operator Settings.

Command Mode Overview



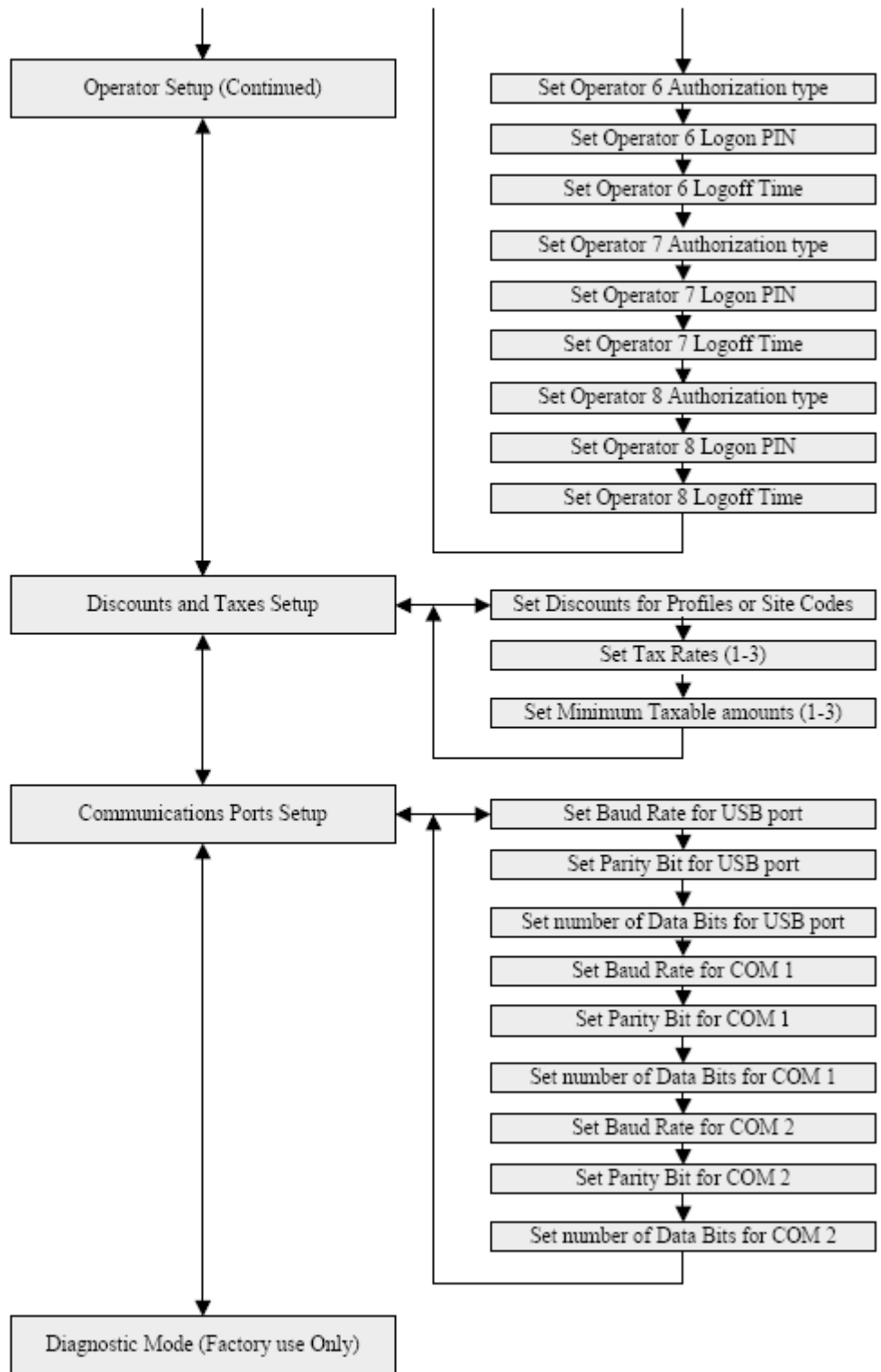
Command Mode
(Continued)

NOTE:
Menus and Options denoted with * (Asterisk) will not appear for some card formats as they do not apply.



Command Mode
(Continued)

NOTE:
Menus and Options denoted with * (Asterisk) will not appear for some card formats as they do not apply.





Setup through Command Mode

Before using the unit it must be set up according to the customer's site and operational requirements. The Command Mode menus follow a common structure throughout the setup.

To access command mode:

At the Idle prompt or Login Prompt

Please Insert
Card

OR

Enter Operator
to Login

Press
Clear – D- 9-5-1 – Ent

Mode Selection
Command Mode

On the keypad use <A> or to select Command Mode Then Press <ENT>

Default Command Mode Password

The default command mode password is 1535

Password:
–

At the Password Prompt press 1-5-3-5- ENT on the keypad

Terminal Setup Mode

Terminal Setup
A or B to Scroll

From the command mode select Terminal Setup mode with the <A> or keys then press <ENT>

In "Terminal Set-up" the following options are accessed by using the <A> and keys to scroll to the setting to change, press the <ENT> key to select that setting for editing.

Set Terminal ID

Terminal ID
1

Press to move to the next setting, <A> to move to the previous setting or <CLR> to exit.

Select Language

Language
English

Select English or French using the <A> key followed by ENT

Press to move to the next setting, <A> to move to the previous setting or <CLR> to exit.

Set Date

yy/mm/dd
##/##/##

Enter Current date using the keypad in the format yy/mm/dd. Press ENT

The Display will indicate "Date Changed" then re-display the current setting. Press <ENT> to confirm setting.

Press to move to the next setting, <A> to move to the previous setting or <CLR> to exit.



Set Time

hh mm ss
##/##/##

Enter current time using the keypad in the format hh/mm/ss press ENT

The Display will indicate "Clock Changed" then re-display the current setting. Press <ENT> to confirm setting.

Press to move to the next setting, <A> to move to the previous setting or <CLR> to exit.

Enable MAF Card Validation

Validate Cards
No

This DOES NOT APPLY TO GOPRINT CARD FORMATS

Enable Transaction Logging

Enable Logging?
No

Select Yes/No using the A or B Keys, press enter to save

Press to move to the next setting, <A> to move to the previous setting or <CLR> to exit.

Enable Command Cards

Accept Command
Yes

Select Yes/No using the A or B keys, press enter to save

Press to move to the next setting, <A> to move to the previous setting or <CLR> to exit.

Set Gateway/Host RFID

Gateway/Host RIF
D 0

DOES NOT APPLY TO GOPRINT CARD FORMATS

Press to move to the next setting, <A> to move to the previous setting or <CLR> to exit.

Set Default Host ID

Default Host ID
0

DOES NOT APPLY TO GOPRINT CARD FORMATS

Press to move to the next setting, <A> to move to the previous setting or <CLR> to exit.

Set Offline Timeout

Offline Timeout
100

DOES NOT APPLY TO GOPRINT CARD FORMATS

Press to move to the next setting, <A> to move to the previous setting or <CLR> to exit.

Show Tenth?

Show #Decimal pt
On values 2

set decimal points to display (0-3) with the A or B keys, press ENT to save

Press to move to the next setting, <A> to move to the previous setting or <CLR> to exit.



Set Command Card PIN

Command Card PIN

DOES NOT APPLY TO GOPRINT CARD FORMATS

Press to move to the next setting, <A> to move to the previous setting or <CLR> to exit.

Set Command Mode Password

Enter New Passwrđ

Set the 4-digit command mode password with the 0-9 buttons then press ENT

Verify Password ENT

Verify 4-digit command mode password with the 0-9 buttons then press

WARNING!! Once this password has been changed to old password is deleted. The only way to revert the password is to return the unit to the factory to RE-initialize the memory where all data and settings will be lost

Press to move to the next setting, <A> to move to the previous setting or <CLR> to exit.

Set Service Mode Password

Enter New Passwrđ

Set the 4-digit service mode password with the 0-9 buttons then press ENT

Verify Password ENT

Verify 4-digit service mode password with the 0-9 buttons then press

WARNING!! Once this password has been changed to old password is deleted. The only way to revert the password is to return the unit to the factory to RE-initialize the memory where all data and settings will be lost

Press to move to the next setting, <A> to move to the previous setting or <CLR> to exit.



Application Set-up Mode

Application Setup A or B to scroll

From Command Mode Select "Application Setup" mode with the <A> or keys then Press <ENT>

In "Application Set-up" the following options are accessed by using the <A> and keys to scroll to the setting to change, press the <ENT> key to select that setting for editing.

Set COM 1 Application

Com 1 App Receipt Printer

Set the application connected to COM 1 with the <A> or buttons then press <ENT>

Applications to Select between: Receipt Printer or None

Press to move to the next setting, <A> to move to the previous setting or <CLR> to exit.

Set COM 2 Application

Com 2 App Meters Reports

Set the application connected to COM 2 with the <A> or buttons then press <ENT>

Applications to Select between: Meters Reports or None

Press to move to the next setting, <A> to move to the previous setting or <CLR> to exit.

Set USB Application

USB App Receipt Printer

Set the application connected to COM 1 with the <A> or buttons then press <ENT>

Applications to Select between: None

Press to move to the next setting, <A> to move to the previous setting or <CLR> to exit.

Set Transaction Port

Transaction Port RF

Set the port for the Transactions to be transmitted through with the <A> or buttons then press <ENT>

Applications to Select between: RF, COM1, COM2, USB, or None

Press to move to the next setting, <A> to move to the previous setting or <CLR> to exit.



Card Set-up Mode

Card Setup:
A or B to scroll

From Command Mode Select "Card Setup" mode with the <A> or keys then Press <ENT>

In "Card Set-up" the following options are accessed by using the <A> and keys to scroll to the setting to change, press the <ENT> key to select that setting for editing.

Set Card Format

Card Format
MAF

Set the Card format with the <A> or buttons then press <ENT>

Formats to Select from: MAF, ACT/ITC, ICS/XCP, VCS, DANYL

Press to move to the next setting, <A> to move to the previous setting or <CLR> to exit.

Set Maximum Cash Card Value

Max Value Cash
\$ 100.00

Set the Maximum (0.00-999.99) with the 0-9 buttons then press ENT

Press to move to the next setting, <A> to move to the previous setting or <CLR> to exit.

Set Maximum Units Card Value

Max Value Units
1000

Set the Maximum (0-999999) with the 0-9 buttons then press <ENT>
May not apply to all card formats

Press to move to the next setting, <A> to move to the previous setting or <CLR> to exit.

Set Units Card Acceptance

Accept Units?
No

Select Yes or No with the <A> or buttons then press <ENT>
May not apply to all card formats

Press to move to the next setting, <A> to move to the previous setting or <CLR> to exit.

Set Cash Card Acceptance

Accept Cash?
Yes

Select Yes or No with the <A> or buttons then press <ENT>

Press to move to the next setting, <A> to move to the previous setting or <CLR> to exit.



STX and ROM Definition

Within most card formats there are different “ROM Code” combinations to expand the availability of unique site codes for different institutions and installations. Traditionally these have been set on DIP Switches or hard coded into the firmware. With the 1500 Series these are set under the Legacy set-up mode. To set the “ROM Code” on the 1500 it must be broken into 2 “nibbles” hence the terms STX (Start nibble of the “ROM Code”) and ROM (second nibble of the “ROM Code”).

The STX and ROM are hexadecimal (HEX) values which have to be converted to decimal for entry purposes. The tables below the HEX to Decimal conversions and some common examples of “ROM Codes”.

STX or ROM in HEX	Setting to use In Decimal	STX or ROM in HEX	Setting to use In Decimal
0	0	8	8
1	1	9	9
2	2	A	10
3	3	B	11
4	4	C	12
5	5	D	13
6	6	E	14
7	7	F	15

Common “ROM Codes”		
	STX Setting	Rom Setting
B9	11	9
C1	12	1
C2	12	2
C3	12	3
C4	12	4
C5	12	5
40	4	0
A5	10	5

Set Card STX

STX 12

Set the Card STX with the 0-9 buttons then press <ENT>

Press to move to the next setting, <A> to move to the previous setting or <CLR> to exit.

Set Card ROM

ROM 6

Set the Card ROM with the 0-9 buttons then press <ENT>

Press to move to the next setting, <A> to move to the previous setting or <CLR> to exit.

Set Blank Card Auto-encoding

AutoEncode Blank No

Select Yes or No with the <A> or buttons then press <ENT>

Press to move to the next setting, <A> to move to the previous setting or <CLR> to exit.

Set Card Site Codes

Site 1 1644

Set the Card Site code(s) with the 0-9 buttons then press <ENT>

Press to move to the next setting, <A> to move to the previous setting or <CLR> to exit.
Get unique site code from GoPrint - Repeat for Site Codes 2-5.



MiniTill Set-up Mode

MiniTill Setup:
A or B to scroll

From Command Mode Select "Minitill Setup" mode with the <A> or keys then Press <ENT>

In "MiniTill Set-up" the following options are accessed by using the <A> and keys to scroll to the setting to change, press the <ENT> key to select that setting for editing.

Set Receipt Printer Type

Receipt Printer
None

Select the printer type with the <A> or buttons then press <ENT>

Printers to Select from: None (Disable Receipt function)
 No Cut (the receipt is manually torn of by the operator)
 FF=Cut (The receipt is cut by the FF Command)
 CBM 1000 (CBM 1000 Printer with integrated cutter)

Press to move to the next setting, <A> to move to the previous setting or <CLR> to exit.

Set Receipt Copies to Print

Receipt Copies
1 Copy

Select the printer type with the <A> or buttons then press <ENT>

Copies Select from: 1 Copy
 2 Copies
 3 Copies
 On Demand (Receipt is only printed if C is pressed after the transaction)

Press to move to the next setting, <A> to move to the previous setting or <CLR> to exit.

Entering Text with the 4X4 Keypad

0-9 Buttons Used to input the characters 0 - 9
A Button Used to input UPPERCASE text characters. Press <A> until desired character is displayed. Press <ENT> to move to the next Character.
B Button Used to input lowercase text characters. Press until desired character is displayed. Press <ENT> to move to the next Character.
C Button Used to input Punctuation text characters. Press until desired character is displayed. Press <ENT> to move to the next Character.
CLR Button Clear entire line
ENT Button Set the current character and move to next. Press <ENT> again when the line is completed.

Set Receipt Header Line 1 Text

Receipt line 1
1 Copy

Enter the text to print on line 1 of the header using 0-9, A, B, D buttons then press <ENT>

Press to move to the next setting, <A> to move to the previous setting or <CLR> to exit.

Set Receipt Header Line 2 Text

Receipt line 2
2 Copy

Enter the text to print on line 2 of the header using 0-9, A, B, D buttons then press <ENT>

Press to move to the next setting, <A> to move to the previous setting or <CLR> to exit.



Set Receipt Header Line 3 Text

Receipt line 3
3 Copy

Enter the text to print on line 3 of the header using 0-9, A, B, D buttons then press <ENT>

Press to move to the next setting, <A> to move to the previous setting or <CLR> to exit.

Set to Allow Card Unflagging

Allow Unflag?
No

Select Yes or No with the <A> or buttons then press <ENT>

Press to move to the next setting, <A> to move to the previous setting or <CLR> to exit.

NOTE: When entering the 3 header lines alpha characters and punctuation can be used.
Pressing <A> will cycle through UPPERCASE letters. Press ENT to select character.
Pressing will cycle through lowercase letters. Press ENT to select character.
Pressing <A> will cycle through Punctuation characters. Press ENT to select character.
If a line is to end in a letter or punctuation character press ENT twice.

Operator Set-up Mode

Operator Setup:
A or B to scroll

From Command Mode Select "Operator Setup" mode with the <A> or keys then Press <ENT>

In "Operator Set-up" the following options are accessed by using the <A> and keys to scroll to the setting to change, press the <ENT> key to select that setting for editing.

Operator Authorization Levels

Each operator must have an authorization level assigned. Levels and functions are below:

Disable	Operator cannot change any field data including balances
Debit Only	Operator can only make Debits
Debit Refund	Operator can only make Debits or Refunds
Add only	Operator can only make Credits
Add Debit Refund	Operator can only make Credits, Debits or Refunds
All	Operator has Full control including changing field data

Operator Authorization

Operator 1 Auth
None

Select the Authorization level with the <A> or buttons then press <ENT>

Press to move to the next setting, <A> to move to the previous setting or <CLR> to exit.

Operator PIN

Operator 1 PIN
1111

Enter the 4 digit PIN with the 0-9 keys followed by <ENT>

NOTE: Default passwords are 1111 for Operator 1, 2222 for Operator 2, 3333 for Operator 3, etc.

Press to move to the next setting, <A> to move to the previous setting or <CLR> to exit.



Operator Logoff

Operator 1
Logoff
time, Min 0

Enter the Operator Logoff time (0 to 99) with the 0-9 keys followed by <ENT> A setting of 0 requires Operator logon each for transaction.

Press to move to the next setting, <A> to move to the previous setting or <CLR> to exit.

These settings are repeated for each operator 2 - 8. Set appropriately.

Discount and tax Setup Mode

Discount and tax
A or B to scroll

From Command Mode Select "Discount and tax Setup" mode with the <A> or keys then Press <ENT>

In "Discount and tax Set-up" the following options are accessed by using the <A> and keys to scroll to the setting to change, press the <ENT> key to select that setting for editing.

Discount and Tax information.

Discounts are only applied to Cash Card Debit or refunds, Not Adds (Credits). Discounts are not applied to Units cards. There is a discount assigned to each Card Profile or Card Site Code.

Taxes are only applied to Cash Card Debits or refunds, Not Adds (Credits). Taxes are not applied to Units cards. There are 3 taxes that can be set, each with it's own minimum value to apply to apply tax to.

Discounts to apply to Card sites

Site1 Discount%
0

Enter the Discount amount (0 to 100) with the 0-9 buttons followed by <ENT>

Press to move to the next setting, <A> to move to the previous setting or <CLR> to exit.

Discounts are assigned for each of the Sites 1-5

Set Tax Rate 1

Tax rate 1 %
0.00

Enter the tax rate (0.00 to 99.99) with the 0-9 buttons followed by <ENT>

Press to move to the next setting, <A> to move to the previous setting or <CLR> to exit.

Set Tax Rate 2

Tax rate 2 %
0.00

Enter the tax rate (0.00 to 99.99) with the 0-9 buttons followed by <ENT>

Press to move to the next setting, <A> to move to the previous setting or <CLR> to exit.

Set Tax Rate 3

Tax rate 3 %
0.00

Enter the tax rate (0.00 to 99.99) with the 0-9 buttons followed by <ENT>

Press to move to the next setting, <A> to move to the previous setting or <CLR> to exit.



Set Minimum taxable value for Tax 1

Min Tax 1
\$0.00

Enter the minimum taxable amount with the 0-9 buttons followed by <ENT>

Press to move to the next setting, <A> to move to the previous setting or <CLR> to exit.

Set Minimum taxable value for Tax 2

Min Tax 2
\$0.00

Enter the minimum taxable amount with the 0-9 buttons followed by <ENT>

Press to move to the next setting, <A> to move to the previous setting or <CLR> to exit.

Set Minimum taxable value for Tax 3

Min Tax 3
\$0.00

Enter the minimum taxable amount with the 0-9 buttons followed by <ENT>

Press to move to the next setting, <A> to move to the previous setting or <CLR> to exit.

Communication Setup Mode

Comm Setup
A or B to scroll

From Command Mode Select "Comm Setup" mode with the <A> or keys then Press <ENT>

In "Communication Set-up" the following options are accessed by using the <A> and keys to scroll to the setting to change, press the <ENT> key to select that setting for editing.

Set USB Baud rate

Baud Rate USB
9600

Select the Baud Rate with the <A> or buttons then press <ENT>

Press to move to the next setting, <A> to move to the previous setting or <CLR> to exit.

Set USB Parity condition

Parity USB
none

Select the None, Odd or Even with the <A> or buttons then press <ENT>

Press to move to the next setting, <A> to move to the previous setting or <CLR> to exit.

Set USB number of Data Bits

Data bits USB
8

Select 7 or 8 with the <A> or buttons then press <ENT>

Press to move to the next setting, <A> to move to the previous setting or <CLR> to exit.

Set COM 1 Baud rate

Baud Rate COM1
9600

Select the Baud Rate with the <A> or buttons then press <ENT>



Press to move to the next setting, <A> to move to the previous setting or <CLR> to exit.

Set COM 1 Parity condition

Parity COM2
none

Select the None, Odd or Even with the <A> or buttons then press <ENT>

Press to move to the next setting, <A> to move to the previous setting or <CLR> to exit.

Set COM 1 number of Data Bits

Data bits COM1
8

Select 7 or 8 with the <A> or buttons then press <ENT>

Press to move to the next setting, <A> to move to the previous setting or <CLR> to exit.

Set COM 2 Baud rate

Baud Rate COM2
9600

Select the Baud Rate with the <A> or buttons then press <ENT>
NOTE: Com 2 is on RF board only

Press to move to the next setting, <A> to move to the previous setting or <CLR> to exit.

Set COM 2 Parity condition

Parity COM2
None

Select the None, Odd or Even with the <A> or buttons then press <ENT>
NOTE: Com 2 is on RF board only

Press to move to the next setting, <A> to move to the previous setting or <CLR> to exit.

Set COM 2 number of Data Bits

Data bits COM2
8

Select 7 or 8 with the <A> or buttons then press <ENT>
NOTE: Com 2 is on RF board only

Press to move to the next setting, <A> to move to the previous setting or <CLR> to exit.

Service mode

Service Mode is used to access meters and logs that record the transaction details.

To access Service mode:

At the Idle prompt or Login Prompt

Please Insert
Card

OR

Enter Operator
to Login

Press <CLR> <D> <9> <5> <1> <ENT>

Mode Selection:
Service Mode

On the Keypad Use <A> or to select "Service Mode" Then Press <ENT>.



Default Service Mode Password

The default Command Mode Password is 1536

Password: _

At the Password Prompt press <1> <5> <3> <6> <ENT> on the keypad.

Read Meters on the LCD

Service Print Meters

Press <ENT> to Select Read Meters mode

Sort Meters by Summary Only

Select the meters report desired with the <A> or keys then Press <ENT>

Scroll through the Meters with the <A> or buttons. Press <CLR> to exit read meters

Summary Meters

Label	Description
Total .CDebits	Total Cash Debited from All cards Including Tax
TOTAL .CAdded	Total Cash Added to All cards (Excluding Refunds)
TOTAL .CRefund	Total Cash Refunded to All cards Including Tax
Total Discount	Total Cash Applied to all deductions
Total NetTax 1	Net tax 1 collected on all Debits and Refunds
Total NetTax 2	Net tax 2 collected on all Debits and Refunds
Total NetTax 3	Net tax 3 collected on all Debits and Refunds
Total .C .Enc	Number of Cash cards encoded through encoding mode
Total .C . \$Enc	Total value Cash cards encoded through encoding mode
Total .UDebits	Total Units Debited from All cards
Total .Uadded	Total Units Added to All cards (Excluding Refunds)
Total .Urefund	Total Units Refunded to All cards

Total .U . #Enc	Number of Units cards encoded through encoding mode
Total .U . Enc	Total value Units cards encoded through encoding mode
GTOTAL .CDebits	Grand Total Cash Debited from All cards Including Tax
GTOTAL .CAdded	Grand Total Cash Added to All cards (Excluding Refunds)
GTOTAL .CRefund	Grand Total Cash Refunded to All cards Including Tax
GTOTAL Discount	Grand Total Cash Applied to all deductions
GTOTAL NetTax 1	Grand Net tax 1 collected on all Debits and Refunds
GTOTAL NetTax 2	Grand Net tax 2 collected on all Debits and Refunds
GTOTAL NetTax 3	Grand Net tax 3 collected on all Debits and Refunds
GTOTAL .C . Enc	Grand Number of Cash cards encoded through encoding mode
GTOTAL .C . \$Enc	Grand Total value Cash cards encoded through encoding mode
GTOTAL .UDebits	Grand Total Units Debited from All cards
GTOTAL .Uadded	Grand Total Units Added to All cards (Excluding Refunds)
GTOTAL .Urefund	Grand Total Units Refunded to All cards
GTOTAL .U . #Enc	Grand Number of Units cards encoded through encoding mode
GTOTAL .U . Enc	Grand Total value Units cards encoded through encoding mode



Meters Sorted By Operator

LCD Label	Description
Oper# .CDebits	Operator # - Cash Debited from All cards Including Tax
OPER# .CAdded	Operator # - Cash Added to All cards (Excluding Refunds)
OPER# .CRefund	Operator # - Cash Refunded to All cards Including Tax
OPER# Discount	Operator # - Cash Applied to all deductions
OPER# NetTax 1	Operator # - Net tax 1 collected on all Debits and Refunds
OPER# NetTax 2	Operator # - Net tax 2 collected on all Debits and Refunds
OPER# NetTax 3	Operator # - Net tax 3 collected on all Debits and Refunds
OPER# .C.#Enc	Operator # - Number of Cash cards encoded through encoding mode
OPER# .C.\$Enc	Operator # - value Cash cards encoded through encoding mode
OPER# UDebits	Operator # - Units Debited from All cards
OPER# UAdded	Operator # -Units Added to All cards (Excluding Refunds)
OPER# URefund	Operator # - Units Refunded to All cards
OPER# .U.#Enc	Operator # - Number of Units cards encoded through encoding mode
OPER# .U. Enc	Operator # - Total value Units cards encoded through encoding mode
OPER# and Operator # is Operator 1,2 etc	
GOper# .CDebits	Grand total Operator # - Cash Debited from All cards Including Tax
GOPER# .CAdded	Grand total Operator # - Cash Added to All cards (Excluding Refunds)
GOPER# .CRefund	Grand total Operator # - Cash Refunded to All cards Including Tax
GOPER# Discount	Grand total Operator # - Cash Applied to all deductions
GOPER# NetTax 1	Grand total Operator # - Net tax 1 collected on all Debits and Refunds
GOPER# NetTax 2	Grand total Operator # - Net tax 2 collected on all Debits and Refunds
GOPER# NetTax 3	Grand total Operator # - Net tax 3 collected on all Debits and Refunds
GOPER# .C.#Enc	Grand total Operator # - Number of Cash cards encoded through encoding mode
GOPER# .C.\$Enc	Grand total Operator # - value Cash cards encoded through encoding mode
GOPER# UDebits	Grand total Operator # - Units Debited from All cards
GOPER# UAdded	Grand total Operator # -Units Added to All cards (Excluding Refunds)
GOPER# URefund	Grand total Operator # - Units Refunded to All cards
GOPER# .U.#Enc	Grand total Operator # - Number of Units cards encoded through encoding mode
GOPER# .U. Enc	Grand total Operator # - Total value Units cards encoded through encoding mode
OPER# and Operator # is Operator 1,2..8	

Meters Sorted by Card Site

Label	Description
Site# .Cdebits	Site # - Cash Debited from All cards Including Tax
Site# .Cadded	Site # - Cash Added to All cards (Excluding Refunds)
Site# .Crefund	Site # - Cash Refunded to All cards Including Tax
Site# .Discount	Site # - Cash Applied to all deductions
Site# .NetTax1	Site # - Net tax 1 collected on all Debits and Refunds
Site# .NetTax2	Site # - Net tax 2 collected on all Debits and Refunds
Site# .NetTax3	Site # - Net tax 3 collected on all Debits and Refunds
Site# .C.#Enc	Site # - Number of Cash cards encoded through encoding mode
Site# .C.\$Enc	Site # - value Cash cards encoded through encoding mode
Site# .Udebits	Site # - Units Debited from All cards
Site# .Uadded	Site # - Units Added to All cards (Excluding Refunds)
Site# .Urefund	Site # - Units Refunded to All cards
Site# .U.#Enc	Site # - Number of Units cards encoded through encoding mode
Site# .U.\$Enc	Site # - Total value Units cards encoded through encoding mode
Site# and Site # is Site 1,2..9	



Print (dump) Meters through Com Port

Service
Print Meters

Press <ENT> to Select Print Meters mode.

Before Printing (Sending) meters be sure to connect the printer or data collection device to the appropriate Com port on the rear of the MiniTill.

Sort Meters by
Summary Only

Select the meters report desired with the <A> or keys then Press <ENT> to send it out the Com port specified in Setup

Printing Meters

Upon selecting Print meters from service mode the above meters are sent out the serial port formatted to print a report 37 characters wide as shown in the example below:

1535 Meters Report. Date yyyy/mm/dd Summary Meters: Label VVVVV Label VVVVV Meters Sorted by Site (Profile): Label VVVVV Label VVVVV Meters Sorted by Operator: Label VVVVV Label VVVVV END OF REPORT	Till ID #### Time hh:mm:ss	1535 Meters Report. Date yyyy/mm/dd Grand Total Summary Meters: Label VVVVV Label VVVVV Grand Total Meters Sorted by Site (Profile): Label VVVVV Label VVVVV Grand Total Meters Sorted by Operator: Label VVVVV Label VVVVV END OF REPORT	Till ID #### Time hh:mm:ss
---	-------------------------------	---	-------------------------------

Clear Meters

Service
Clear Meters

Press <ENT> to Select Clear Meters mode.

Confirm clear meters

Clear Meters?
ENT=Yes CLR=No

Press <ENT> to Clear the meters. Press <CLR> to leave meters intact

Print (dump) Transaction Log through Com Port

Before Printing (Sending) meters be sure to connect the printer or data collection device to the appropriate Com port on the rear of the MiniTill.

Service
Print Trans Log

Press <ENT> to print (send) Transaction Log.



Transaction Types

Transaction Types	Description
1	TRANS_TYPE VEND CASH Normal cash card vend
2	TRANS_TYPE VEND UNITS Normal units card vend
4	TRANS_TYPE VEND FAX Fax vend, cash cards only supported
10	TRANS_TYPE ENCODED Card Encoded with the backdoor keypad access code
20	TRANS_TYPE FAILED0 Card removed during vending session
21	TRANS_TYPE FAILED1 Card verify failed
30	TRANS_TYPE PFAILRECOVER Card value recovered after powerfail
100	TYPE COMMAND MODE Command mode was entered from the keypad
200	TRANS_TYPE TEST Bypass mode transaction, started from diagnostics menu

Clear Transaction Log

Service
Clear Trans Log

Press <ENT> to Select Clear Transaction log mode.

Confirm to clear meters

Clear Log?
ENT=Yes CLR=No

Press <ENT> to Clear the Log. Press <CLR> to leave meters intact

Legacy Format Command Cards and Use

Some of the Service functions can be achieved by using "Command" cards. There are command cards to initiate Read Meters, Print Meters, Clear Meters, and Print Transaction Log.

Legacy Command cards must be the matching Format, STX and ROM code as set in the MiniTill under "Card Setup" For Command cards to be accepted the "Terminal Setting" "Accept Command cards" must be set to yes.

Using the Read Meters Command Card

At the Idle prompt or Login Prompt

Please Insert
Card

OR

Enter Operator
to Login

Press <CLR> <D> <9> <5> <1> <ENT>

Insert the Read Meters Card.

Sort Meters by
Summary Only

Select the meters report desired with the <A> or keys then Press <ENT>

Scroll through the Meters with the <A> or buttons. Press <CLR> to exit read meters

Using the Print Meters Command Card

Before Printing (Sending) meters be sure to connect the printer or data collection device to the appropriate Com port on the rear of the MiniTill.

At the Idle prompt or Login Prompt

Please Insert

OR

Enter Operator

Press <CLR> <D> <9> <5> <1> <ENT>



Card

to Login

Insert the Print Meters Card.

Sort Meters by
Summary Only

Select the meters report desired with the <A> or keys then Press <ENT> to send it out the Com port specified in Setup

Using the Clear Meters Command Card

At the Idle prompt or Login Prompt

Please Insert
Card

OR

Enter Operator
to Login

Press <CLR> <D> <9> <5> <1> <ENT>

Insert Clear meters card then confirm intension to clear meters.

Clear Meters?
ENT=Yes CLR=No

Press <ENT> to Clear the meters. Press <CLR> to leave meters intact

At the Idle prompt or Login Prompt

Please Insert
Card

OR

Enter Operator
to Login

Press <CLR> <D> <9> <5> <1> <ENT>

Insert Clear meters card then confirm intension to clear meters.

Clear Meters?
ENT=Yes CLR=No

Press <ENT> to Clear the meters. Press <CLR> to leave meters intact



Using the Encode Cash Command Card

The Encode card will only function when an Operator with Credit Authorization is logged in.

Inserting the Encode cash card at any other time will result in the error message:

Operator Not Authorized	OR	Not Logged In
-------------------------	----	---------------

With an appropriately Authorized operator logged in, Insert the Encode Cash card.

Purse Value \$ #.###	Where #.### is the preset value on the encode card
-------------------------	--

To change the value to encode simply enter a new value followed by ENT

Purse Value \$ N.NNN	Note Pressing clear will return to the original value of the Encode card.
-------------------------	---

When the desired value is set the display will show:

Encode \$ #.### Insert User Card	Where #.### is the preset value on the encode card
-------------------------------------	--

Insert the Card(s) to be encoded. Once finished press the CLR button to end the encode session. If a receipt printer is attached and configured a receipt showing the Encode activity will be printed.

```

Date 2008/05/14 10:50:24

Till ID #   1 Operator #   1
Transaction 220
Card Encoding Report
Card Value      $ 1.00
Cards Encoded      3
Total Value Encoded $ 3.00
*****

```

Using the Encode Units Command Card

Units cards may not apply to all card formats.

The Encode card will only function when an Operator with Credit Authorization is logged in.

Inserting the Encode Units card at any other time will result in the error message:

Operator Not Authorized	OR	Not Logged In
-------------------------	----	---------------

With an appropriately Authorized operator logged in, Insert the Encode Units card.

Purse Value ####	Where #### is the preset value on the encode card
---------------------	---

To change the value to encode simply enter a new value followed by ENT



Purse Value
NNNN

Note Pressing clear will return to the original value of the Encode card.

When the desired value is set the display will show:

Encode U ####
Insert User Card

Where #### is the preset value on the encode card

Insert the Card(s) to be encoded. Once finished press the CLR button to end the encode session. If a receipt printer is attached and configured a receipt showing the Encode activity will be printed.

```
Date 2008/05/14 10:50:24

Till ID #    1 Operator #    1
Transaction 220
  Card Encoding Report
Card Value      U 100
Cards Encoded      3
Total Value Encoded U 300
*****
```



Card Error Messages

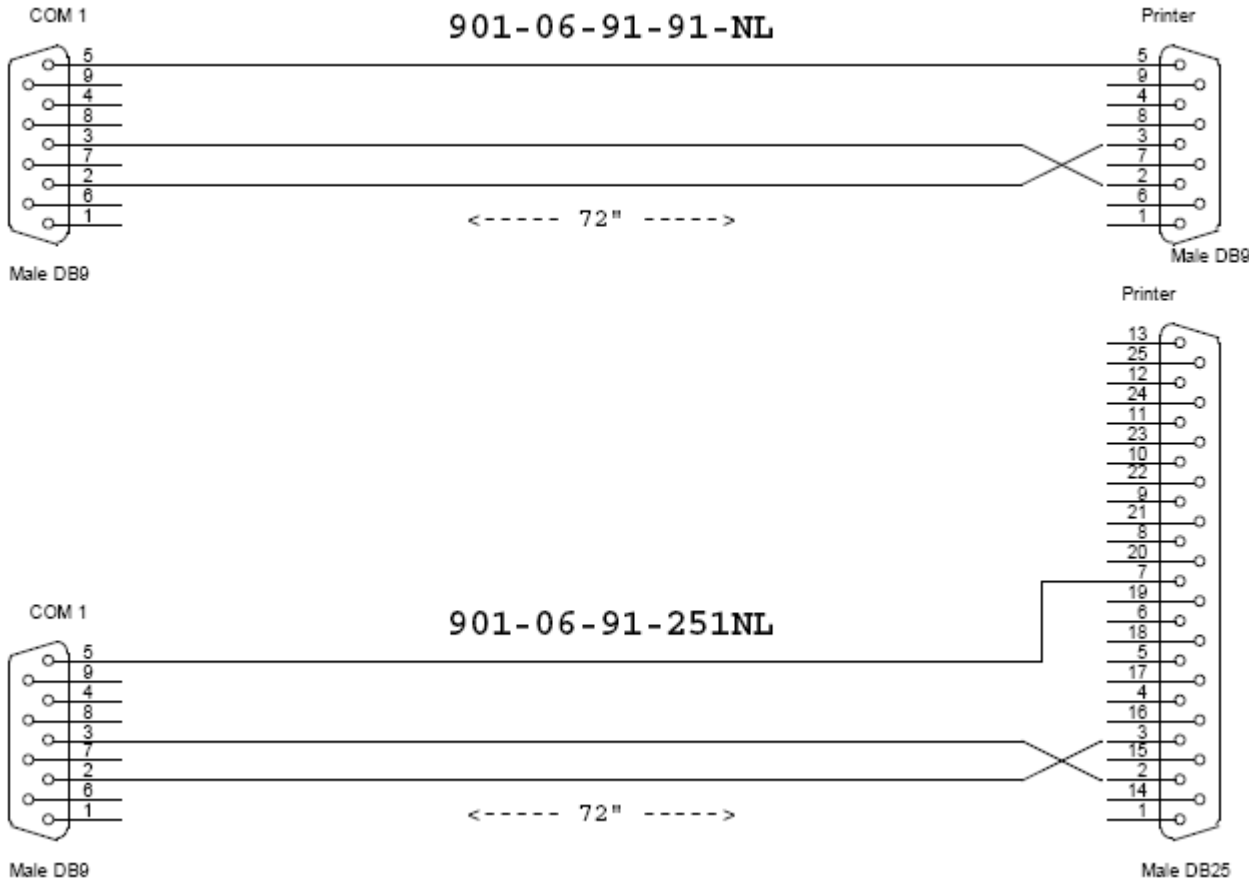
Possible errors generated during card reading and acceptance checking:

Display message	Probable Cause
FLAGGED CARD	Card LRC was inverted, card may have been removed during vending.
Card Over Max	Purse value is greater than Card Setup->max value cash, (or max value units if purse is units)
INVALID TYPE	Card is not either a user, command, or account card. Other types have yet to be defined
Invalid Site	This is only used for old ACT format, card's site does not match any configured site codes
Please try again	The card's LRC check does not match the calculated LRC.
Please try again	This is used for either format card if no start byte is found.
Blank Card	No data on the card.
INVALID CARD	Parity or other error. Other non-recognized card formats can generate this error.
Format not accepted	Card is a different format than what is set in Card setup->Format
Insufficient funds	Card value was less then the amount to deduct
Units not accepted	Units cards are disabled in terminal setup.



Receipt Printer Cables

Depending upon the Receipt printer used with the 1535, either a cable with a Male DB9 Connector or Male DB 25 is required. Receipt and report printers, Cables, and supplies can be purchased separately from GoPrint Systems. Contact your sales representative for details.

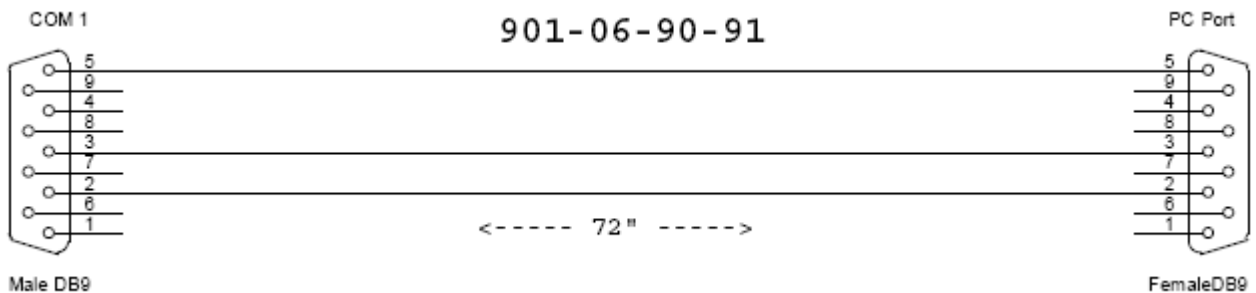


Refer to the documentation with the printer to set its communications parameters (Baud, Parity, Data Bits) to match those set on the 1535 in "Command Mode _ Communications Ports setup".

PC communication Cables

In order to capture meters or logs the 1535 can be connected to a PC through RS-232 or USB. Cables and supplies can be purchased separately from GoPrint Systems. Contact your sales representative for details.

RS232 Serial Cable





USB Serial Cable

The USB cable is a standard A to B type. ITC systems Part Number 901-USB

