



**Print/Copy Multi-Function  
Card Reader  
Instruction Manual**

**Model: GS-1500 (Serial/USB)  
Firmware 0.03.08 and higher**

**April 2009**





GOPRINT PRINT/COPY CARD READER

**Table of Contents:**

**SALES AND SERVICE.....3**  
**QUICK REFERENCE SET UP GUIDE.....4**

**POWER INITIALIZATION.....7**

**SETUP/ACCESS COMMAND MODE.....8**

**COMMAND MODE OVERVIEW.....9**  
    TERMINAL SETUP  
    APPLICATION SETUP  
    CASH CARD PRICE SETUP  
    UNITS CARD PRICE SETUP  
    DISCOUNTS AND TAXES SETUP  
    COMMUNICATION PORTS SETUP  
    COPIER INTERFACE SETUP

**SERVICE MODE OVERVIEW.....23**  
    READ METERS  
    PRINT METERS  
    CLEAR METERS  
    PRINT TRANSACTION LOG  
    CLEAR TRANSACTION LOG  
    CLEAR OFFLINE LOG  
    BYPASS

**CARD ERROR MESSAGES.....30**

**CONNECTING THE USB READER TO GOPRINT RELEASE STATION.....31**

**INSTALLATION INSTRUCTIONS.....32**  
    CONNECTION TO PHOTOCOPIER



## **Sales and Service**

At GoPrint, complete customer satisfaction is our number one goal. As such, customer support is readily available to satisfy any need you may have. Whether it's sales information, a service requirement or just general inquiry, you can be assured of a prompt response to your need(s).

### **Sales**

If you are a new or existing customer with a new installation in mind, our highly qualified sales staff can custom tailor a product solution for "your" particular needs. Simply telephone GoPrint at 1-888-52-PRINT and ask for sales assistance. You may also email us at [sales@goprint.com](mailto:sales@goprint.com)

GoPrint Systems, Inc.  
One Annabel Lane, Suite 105  
San Ramon, CA 94583

Tel: 1-888-52-PRINT  
Fax: 1-925-790-0071

### **Service**

If you require technical assistance advice or parts please contact our Support Department at 1-888-52-PRINT ext: 30 or email us at [support@goprint.com](mailto:support@goprint.com)

Returns and swapouts should be sent ONLY after receiving prior approval and an RMA.

GoPrint Systems, Inc.  
One Annabel Lane  
Suite 105  
San Ramon, CA 94583

Tel: 1-888-52-PRINT ext: 30  
Fax: 1-925-790-0071

Please visit us at [www.GoPrint.com](http://www.GoPrint.com)

*GOPRINT . . . COMMITTED TO COMPLETE CUSTOMER SATISFACTION*

### **Overview**

Thank you for purchasing the GoPrint Print/Copy Card Reader. The unit can be connected to a GoPrint Print Release Station using either a Serial Cable or USB Cable (may require installation of USB driver). It is connected to a Photocopier using a custom cable.

When a card is inserted into the reader the value is displayed on the LED display and transmitted to the attached application. The application performs its functions, and then transmits the new value to be written onto the card and the card is updated and returned to the customer.

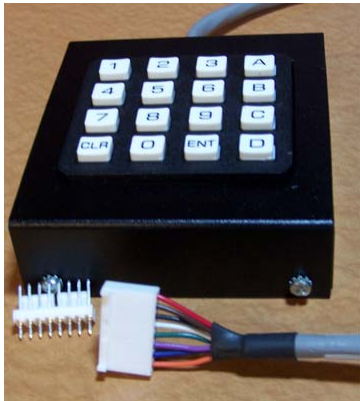


## Quick Reference Set Up Guide

In order for multi-function Print/Copy Card Reader to operate properly, it must be initially set up using a keypad & cable 901-7020-KYPD cable to the keypad with male/male gender changer..

*\*\*NOTE: Each reader comes pre-programmed, but can lose its programming during shipment,*

*movement or transfer. It is very easy to set up.*



Step 1 – Connect the Keypad to the inside of the reader

1. Use the key to open the back of the unit and slide the housing off
2. Connect the 901-7020-KYPD cable to the keypad with male/male gender changer.
3. Connect red wire to pin 1 on the board (far right with front facing you).
4. Hit CLR-D-9-5-1-ENT
5. Hit ENT when you see Mode Selection/Command Mode
6. Type 1-5-0-0-ENT for the password
7. You are now in programming mode.

**NOTE: Buttons <A> <B> will scroll you through the menu settings, hit clear to exit out of each setting and get to the next one**

### **DEFAULT SETTINGS – Serial Connection**

#### TERMINAL SET-UP MODE

Set Terminal ID	1
Select Language	English
Set Date:	yy/mm/dd
Set Time:	hh/mm/ss
Enable Transaction Logging	No
Enable Command Cards	Yes
Set Default Host ID	0
Set Offline Timeout	10
Set Decimal Points to Display	2
Set Cmd Password	-
Set Svr Password	-

#### DEFAULT SETTINGS

#### CARD SET-UP MODE

SetCard Format	ACT/ITC (for Debitek Sites this is Danyl)
Set Maximum Cash Card Value	75.00
Set Maximum Units Card Value	1000
Set Units Card Acceptance	NO
Set Cash Card Acceptance	YES



Set Card Flagging	YES
<u>CARD SET-UP MODE (cont.)</u>	<u>DEFAULT SETTINGS</u>
Set Accept Flagged cards	NO
Set Minimum Cash Card balance Override	0.000
Set Minimum Units Card balance Override	0
ACCEPT DANYL	NO (yes for Debitek Sites)
ACCEPT ICS/XCP	NO
Set Card STX	12
Set Card ROM	6
SITE 1	Varies for each location
SITE 2	4095 unless various site codes (Hex for Danyl)
SITE 3	4096 unless various site codes

\*\*\*NOTE: Site Codes are unique to each individual location. To obtain this number please contact GoPrint Hardware support at 888-52-PRINT x30.

<u>COM SET-UP</u>	<u>DEFAULT SETTINGS</u>
BAUD RATE USB	38400
PARITY USB	NONE
DATA BITS USB	8

DIAGNOSTICS = NOT USED BY GOPRINT...

### USING GOPRINT READER IN A DEBITEK ENVIRONMENT

The following changes must also be made to the default programming – see above inferences for additional Debitek programming notes.

Under Applications,

- Copier Type = None
- Ignore Pulses = 1015 No
- Disable Relay = 1015 No
- Transaction Port = NONE

### CONNECTING VIA USB CABLE

\*\*\*NOTE: Be sure to install the USB Driver on the computer prior to attaching the USB card reader to the Release Station CPU. The USB Driver can be found at <http://ftdichip.com/Drivers/CDM/CDM%202.04.16.exe>

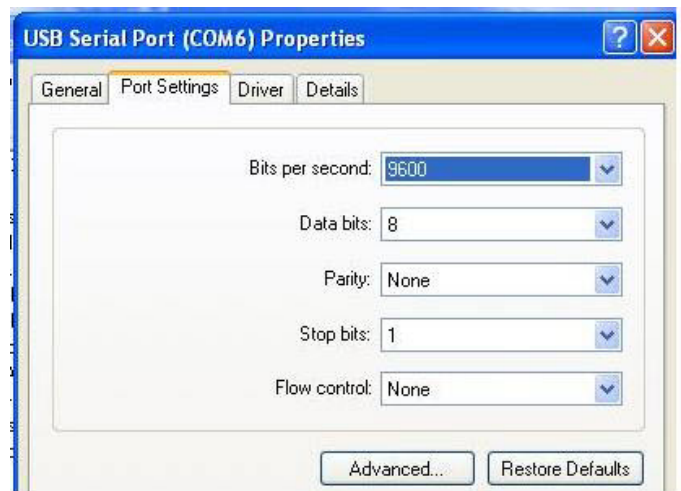
**Step 1:** Connect the Cable then go to the Device Manager and check the COM Port Assignment given at the OS Level

**Step 2:** Use the key to open the reader, and connect the Keypad. Log-in by pressing D-9-5-1-ENT.

Press ENT when you see “Command Mode”.  
Then Press 1-5-0-0 ENT for the password  
Press “A” until you see “Application Setup” & Press ENT

Change COM1 APP to NONE  
Change USB APP to PRINT 1015, press ENT to save

Change Copier type to NONE and Save.  
Change Transaction Port to NONE and Save  
Change 1015 COM ID to 1 and Save





Hit CLR and "A" Until you get to "COMM Setup" and hit ENT  
Change BAUD Rate USB to 9600  
Change PARITY USB to NONE  
Change Data Bits to 8

***\*\*\*There are changes to be made in the GoPrint Software to configure the unit to be read by the Release Station. See pg 31 for Software setup instructions.***

**To use this device as a print & copy reader simultaneously**

- 1.) Login
- 2.) Change copier type to Copier 2
- 3.) Set Application Mode COM1 1015 READER
- 4.) Connect Serial Cable to COM1
- 5.) Configure GoPrint Control Center to **ITC1015 READER COM1**
- 6.) Connect Copier Cable inside unit



## **Power Up / Initialization**

Upon application of power the 1500 / 15RF Reader will initialize itself and display :“M15X Multi” “Version X.XX.XX” for a short time, “RFIDXXXX”. The RFID is the unique identification number that identifies the reader for wireless communications. After initializing the Card reader will enter the Idle mode and display:

---

To make a Copy  
Insert Card

---

## **Operation**

The customer inserts a valid cash card, units card or credit card (depending on the reader's settings) to enable the photocopier or service. As copies or services are rendered the card is debited accordingly. When the customer is finished he presses the front push button below the display to end the transaction and have his updated card returned.



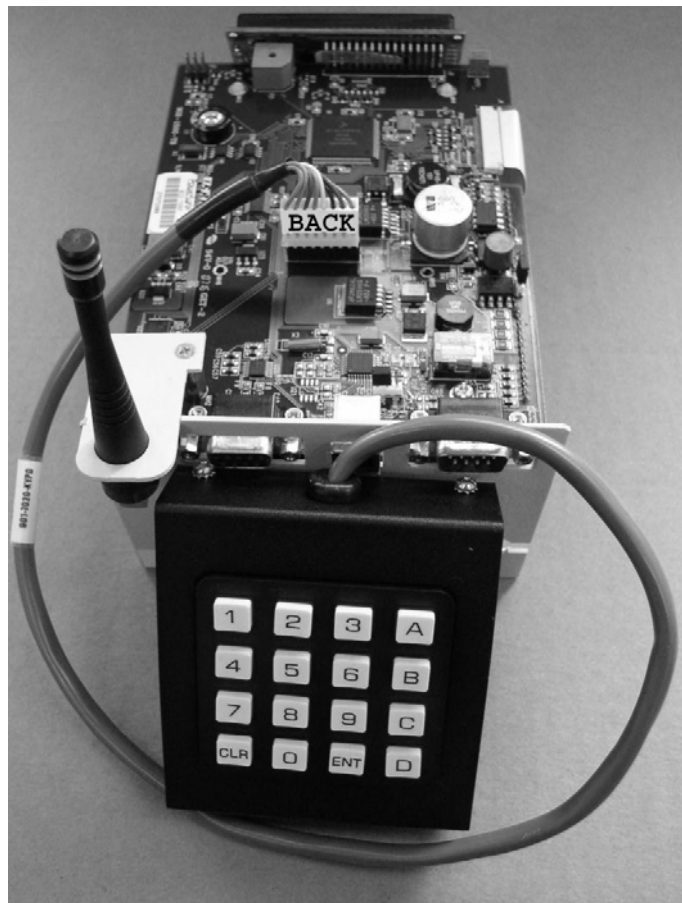
## Setup Through Command Mode

Before using the 1500 it must be set up according to the customer's site and pricing requirements. The Command Mode menus follow a common structure throughout setup.

### To access command mode:

Install the programming keypad (Part # 4035) on to the keypad connector JP5 located on the Top Board. To access the connector:

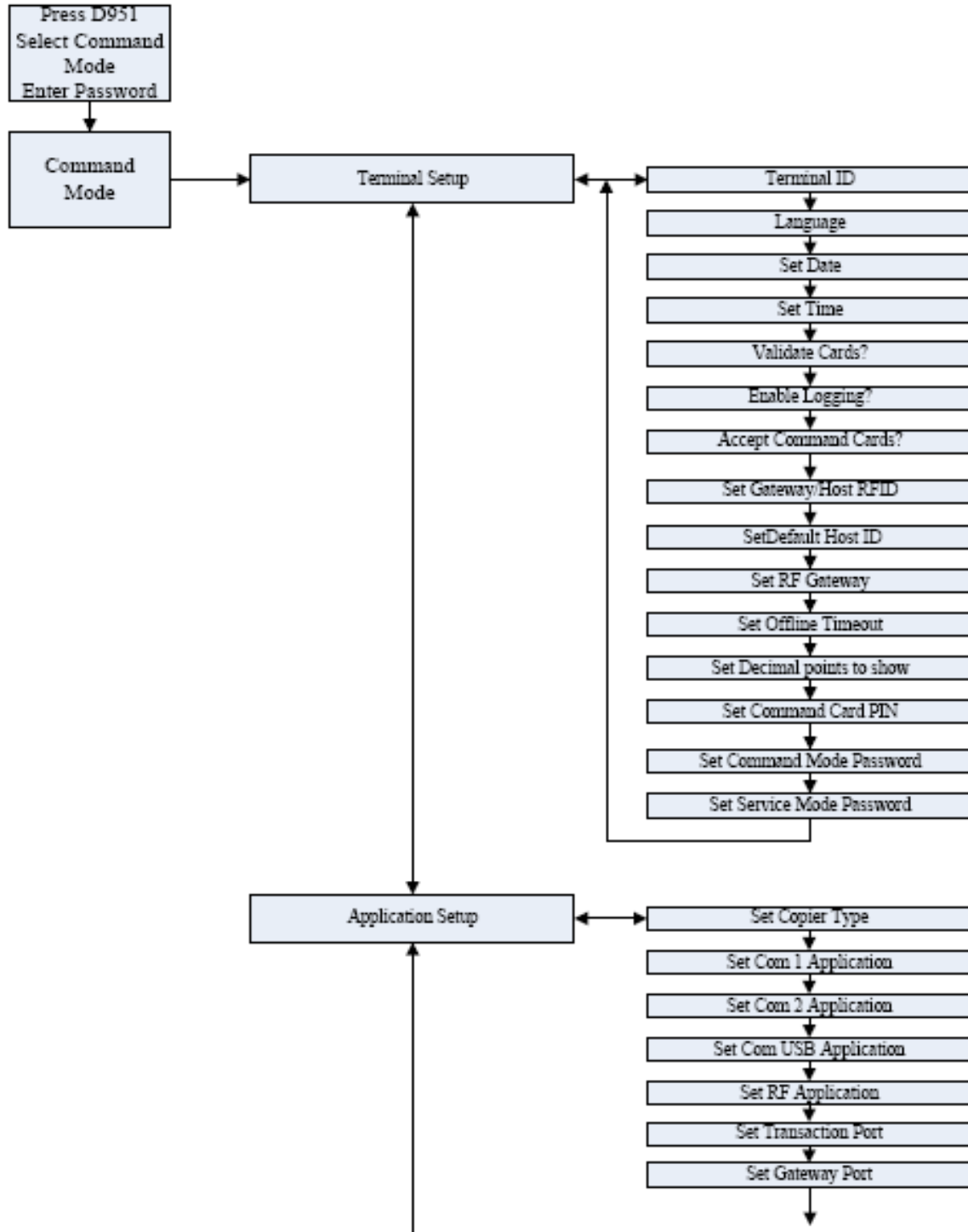
1. Unplug the Card reader from the wall (power outlet).
2. Insert the key in the back of the reader and turn it 180 degrees clock wise to release the chassis from the case.
3. Gently Slide the Chassis out the rear of the case.
4. Install the keypad cable into JP5 on the top board observing the "BACK" label position
5. Re-apply power to the reader and program as described in this document:
6. When finished disconnect power then remove the keypad.
7. Re-assemble the reader by carefully sliding it back into the case then secure with the key.

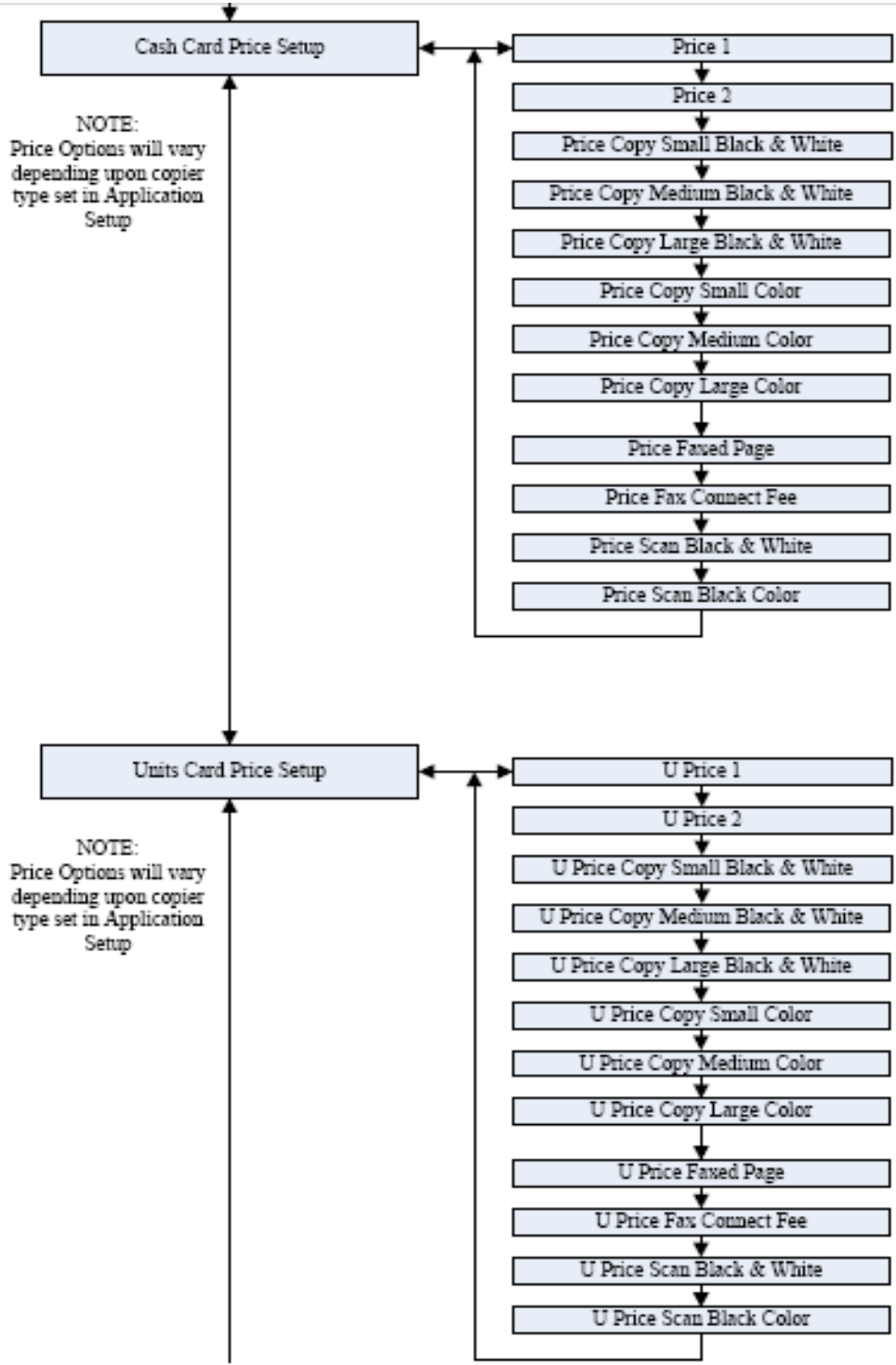


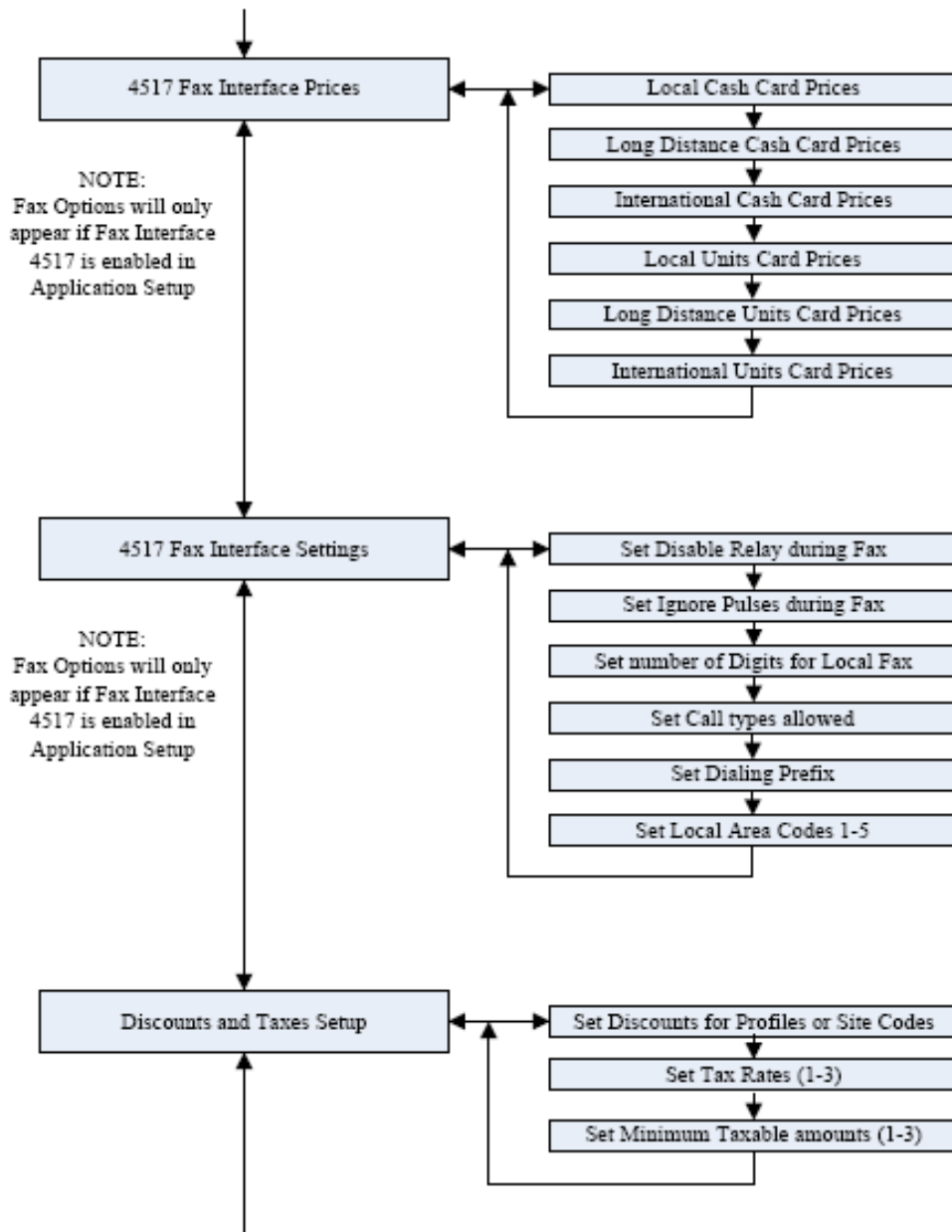


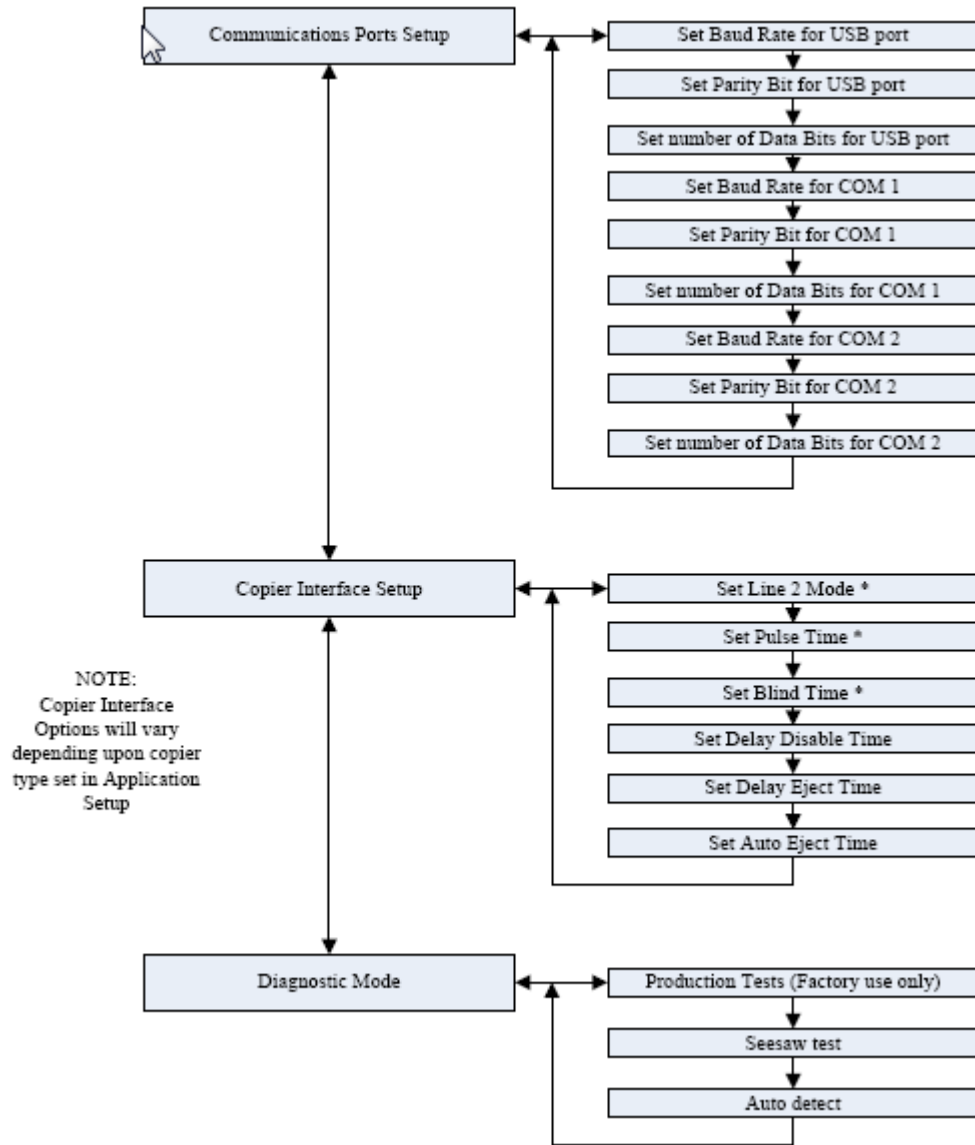


## Command Mode Overview











## Setup through Command Mode

Before using the 1500 it must be set up according to the customer's site and operational requirements. The Command Mode menus follow a common structure throughout the setup.

### To access command mode:

At the Idle prompt:

Please Insert Card

Password:

Mode Selection:

Press <CLR> <D> <9> <5> <1> <ENT>

At the Password Prompt press <1> <5> <0> <0> <ENT> on the keypad

On Keypad use <A> or <B> to select "Command Mode" Then Press <ENT>.

### Terminal Set-up Mode

Terminal Setup

From Command Mode Select "Terminal Setup" mode with the <A> or <B> keys then Press <ENT>

Press <B> to move to the next setting, <A> to move to the previous setting or <CLR> to exit.

### Select Language

Language English

Select English or French via the <A> or <b> key followed by <ENT>

Press <B> to move to the next setting, <A> to move to the previous setting or <CLR> to exit.

### Set Date

yy/mm/dd  
##/##/##

Enter the Current date via the keypad in the format YY/MM/DD <ENT>

The Display will indicate "Date Changed" then re-display the current setting. Press <ENT> to confirm setting.

Press <B> to move to the next setting, <A> to move to the previous setting or <CLR> to exit.

### Set Time:

Hh mm ss ##/##/##

Enter the current time via the keypad in the keypad, in the format: HH MM SS <ENT> Note: Hours, setting is in the 24 hour format

The Display will indicate "Clock Changed" then re-display the current setting. Press <ENT> to confirm setting.

Press <B> to move to the next setting, <A> to move to the previous setting or <CLR> to exit.

### Enable MAF card Validation

Validate Cards? No

Select yes or No via the <A> or <B> key followed by <ENT>. NOTE: **this should be no**

Press <B> to move to the next setting, <A> to move to the previous setting or <CLR> to exit.

### Enable Transaction Logging

Enable Logging? No

Select yes or No via the <A> or <B> key followed by <ENT>. NOTE: **this should be no**

Press <B> to move to the next setting, <A> to move to the previous setting or <CLR> to exit.

### Enable Command Cards

Accept Command Card? Yes

Select yes or No via the <A> or <B> key followed by <ENT>. NOTE: **this should be yes**



Press <B> to move to the next setting, <A> to move to the previous setting or <CLR> to exit.

### Set Default Host ID

Default Host ID? 0
--------------------

set the 5 Digit ID with the 0-9 buttons then press <ENT> THIS DOES NOT APPLY FOR GOPRINT FORMATS

Press <B> to move to the next setting, <A> to move to the previous setting or <CLR> to exit.

### Set Offline Timeout

Offline Timeout? 10
---------------------

set the offline timeout (0-1000) with the 0-9 buttons then press <ENT> THIS DOES NOT APPLY FOR GOPRINT FORMATS

Press <B> to move to the next setting, <A> to move to the previous setting or <CLR> to exit.

### Decimal Points to Display

Show #Decimal pt on Values? 2
----------------------------------

set the decimal points (0-3) with the <A> or <B> buttons then press <ENT>

Press <B> to move to the next setting, <A> to move to the previous setting or <CLR> to exit.

### Set Command Card PIN

Set Command Card PIN
----------------------

set the 5 Digit ID with the 0-9 buttons then press <ENT> THIS DOES NOT APPLY FOR GOPRINT FORMATS

Press <B> to move to the next setting, <A> to move to the previous setting or <CLR> to exit.

### Set Command Mode Password

Enter New Passwd
Verify Password

set the 4 Digit Command mode Password with the 0-9 buttons then press <ENT>

Verify the 4 digit Command Mode Password with the 0-9 buttons then press <ENT>

**WARNING: Once this password is changed the old password is deleted. The only way to revert the password is to return the unit to the factory to RE-Initialize the memory where all data and settings will be lost**

Press <B> to move to the next setting, <A> to move to the previous setting or <CLR> to exit.

### Set Service Mode Password

Enter New Passwd
Verify Password

set the 4 Digit Command mode Password with the 0-9 buttons then press <ENT>

Verify the 4 digit Command Mode Password with the 0-9 buttons then press <ENT>

**WARNING: Once this password is changed the old password is deleted.**

Press <B> to move to the next setting, <A> to move to the previous setting or <CLR> to exit.



### Application Set-up Mode

Application Setup

From Command Mode Select "Application Setup" mode with the <A> or <B> keys then Press <ENT>

In "Application Set-up" the following options are accessed by using the <A> and <B> keys to scroll to the setting to change, press the <ENT> key to select that setting for editing.

### Set Copier Type

Copier Type  
2 Price Pulse

Set the copier type with the <A> and <B> keys then press <ENT>

Copier types to Select From:

- |                 |   |
|-----------------|---|
| 2 Price Pulse   | "Standard" 2 price copier Interface                                 |
| KMinolta Bizhub | Enhanced mode to Support Bizhub Line                                |
| 4210 Panasonic  | 4210 Interface supporting specific Panasonic Copiers                |
| 4210 Sharp      | 4210 Interface supporting specific Sharp Copiers                    |
| 4210 Generic    | 4210 Generic Interface supporting enhanced features of some copiers |
| None            | Not attached to a copier.   |

Press <B> to move to the next setting, <A> to move to the previous setting or <CLR> to exit.

### Set COM1 Application

COM 1 App  
None

Set the application connected to COM 1 with the <A> <B> buttons then press <Ent>

Applications to Select From:

- |                    |                   |
|--------------------|-------------------|
| None               | Meters Reports    |
| Print 1015Protocol | POS Softill       |
| PC Paytron         | 4210 Interface    |
| 4517 Fax Interface | ITC 1018 Protocol |
| Sharp POS Protocol |                   |

Press <B> to move to the next setting, <A> to move to the previous setting or <CLR> to exit.

### Set USB Application

USB App  
None

Set the application connected to the USB port with the <A> <B> buttons then press <ENT>

Applications to Select From:

- |                    |                |
|--------------------|----------------|
| None               | Meters Reports |
| Print 1015protocol | POS Softill    |
| Protocol PC        |                |
| Paytron Protocol   |                |

Press <B> to move to the next setting, <A> to move to the previous setting or <CLR> to exit.

### Set Transaction Port

Transaction Port  
RF

Set the port for the Transactions to be transmitted through with the <A> or <B> buttons then press <ENT>

Applications to Select between RF, COM1, COM2, USB, or None

Press <B> to move to the next setting, <A> to move to the previous setting or <CLR> to exit.

### Set Gateway Port



Gateway Port Set the port for the Gateway Communications to be transmitted through with the RF <A> or <B> buttons then press <ENT>

Applications to Select between RF, COM1, COM2, USB, or None

Press <B> to move to the next setting, <A> to move to the previous setting or <CLR> to exit.

**Card Set-up Mode**

Card Setup  
A or B to Scroll

From Command Mode Select "Card Setup" mode with the <A> or <B> keys then Press <ENT>

In "Card Set-up" the following options are accessed by using the <A> and <B> keys to scroll to the setting to change, press the <ENT> key to select that setting for editing.

**Set Card Format**

Card Format  
MAF

Set the Card Format with the <A> or <B> keys then press <ENT>

GoPrint primarily uses ACT/ITC format and in rare cases Danyl

Press <B> to move to the next setting, <A> to move to the previous setting or <CLR> to exit.

**Set Maximum Cash Card Value**

Max Value Cash  
\$100.00

Set the Maximum (0.00-999.99) with the 0-9 buttons then press <ENT>

Press <B> to move to the next setting, <A> to move to the previous setting or <CLR> to exit.

**Set Maximum Units Card Value**

Max Value Units  
1000

Set the Maximum (0.00-999.99) with the 0-9 buttons then press <ENT>

Press <B> to move to the next setting, <A> to move to the previous setting or <CLR> to exit.

**Set Units Card Acceptance**

Accept Units?  
No

Select Yes or No with the <A> or <B> buttons then press <ENT> Units may not apply to all card formats.

Press <B> to move to the next setting, <A> to move to the previous setting or <CLR> to exit.

**Set Cash Card Acceptance**

Accept Cash?  
Yes

Select Yes or No with the <A> or <B> buttons then press <ENT>

Press <B> to move to the next setting, <A> to move to the previous setting or <CLR> to exit.

**Set Card Flagging**

Flag Cards?  
Yes

Select Yes or No with the <A> or <B> buttons then press <ENT> temporarily flag cards while transactions are being made

Press <B> to move to the next setting, <A> to move to the previous setting or <CLR> to exit.





### **Set Accept Flag Cards**

Accept Flagged?  
No

Select Yes or No with the <A> or <B> buttons then press <ENT> to accept cards that were flagged during previous transactions

Press <B> to move to the next setting, <A> to move to the previous setting or <CLR> to exit.

### **Set Minimum Cash Card balance Override**

Min Balance Over?  
\$0.00

Set the override (0.00-99.99) with the 0-9 buttons then pres <ENT>. 0 disables the override function

Press <B> to move to the next setting, <A> to move to the previous setting or <CLR> to exit.

### **Set Minimum Units Card balance Override**

Min Balance U?  
0

Set the override (0.00-99.99) with the 0-9 buttons then pres <ENT>. 0 disables the override function

Press <B> to move to the next setting, <A> to move to the previous setting or <CLR> to exit.

## **STX and ROM Definition**

Unless you are told otherwise, GoPrint STX should be set to 12, and the ROM should be set to 6  
Not applicable with DANYL format.

### **Set Card STX**

STX?  
12

Set the card STX with the 0-9 buttons then press <ENT>

Press <B> to move to the next setting, <A> to move to the previous setting or <CLR> to exit.

### **Set Card ROM**

STX?  
6

Set the card ROM with the 0-9 buttons then press <ENT>

Press <B> to move to the next setting, <A> to move to the previous setting or <CLR> to exit.

### **Set Card Site Code**

Site 1?  
164

Set the site code(s) with the 0-9 buttons then press <ENT>

Press <B> to move to the next setting, <A> to move to the previous setting or <CLR> to exit.

Repeat for Site Codes 2-5

**NOTE: All unused sites should be set to 4095 to avoid the possibility of accepting cards from other installations**

## **Cash Card Price Setup (for copiers)**

NOTE: Only the prices that apply to the copier types selected in Application Setup will Appear

\$ Price Setup  
A or B to Scroll

From the command mode select "\$ Price Setup" mode with the <A> or <B> keys then press <ENT>



In the "\$ Price Setup" the following options are accessed by using the <A><B> keys to scroll to the setting change, press <ENT> key to select that setting for editing.

**Set Price 1**

Price 1  
\$0.10

Set price 1 (0-65.535) with the 0-9 buttons then press <ENT>  
Applies to 2 Price Copier Interface Only

Press <B> to move to the next setting, <A> to move to the previous setting or <CLR> to exit.

**Set Price 2**

Price 2  
\$0.10

Set price 1 (0-65.535) with the 0-9 buttons then press <ENT>  
Applies to 2 Price Copier Interface Only

Press <B> to move to the next setting, <A> to move to the previous setting or <CLR> to exit.

**Set Small Black & White Price**

Copy Small B&W  
\$0.10

Set price 1 (0-65.535) with the 0-9 buttons then press <ENT>  
Applies to Bizhub Panasonic and Sharp Copier Interface Only

Press <B> to move to the next setting, <A> to move to the previous setting or <CLR> to exit.

**Set Medium Black & White Price**

Copy Med B&W  
\$0.10

Set price 1 (0-65.535) with the 0-9 buttons then press <ENT>  
Applies to Bizhub Panasonic and Sharp Copier Interface Only

Press <B> to move to the next setting, <A> to move to the previous setting or <CLR> to exit.

**Set Large Black & White Price**

Copy Large B&W  
\$0.10

Set price 1 (0-65.535) with the 0-9 buttons then press <ENT>  
Applies to Bizhub Panasonic and Sharp Copier Interface Only

Press <B> to move to the next setting, <A> to move to the previous setting or <CLR> to exit.

**Set Small Color Price**

Copy Small CLR  
\$0.10

Set price 1 (0-65.535) with the 0-9 buttons then press <ENT>  
Applies to Bizhub Panasonic and Sharp Copier Interface Only

Press <B> to move to the next setting, <A> to move to the previous setting or <CLR> to exit.

**Set Medium Color Price**

Copy Med CLR  
\$0.10

Set price 1 (0-65.535) with the 0-9 buttons then press <ENT>  
Applies to Bizhub Panasonic and Sharp Copier Interface Only

Press <B> to move to the next setting, <A> to move to the previous setting or <CLR> to exit.

**Set Large Color Price**

Copy Large CLR  
\$0.10

Set price 1 (0-65.535) with the 0-9 buttons then press <ENT>  
Applies to Bizhub Panasonic and Sharp Copier Interface Only

Press <B> to move to the next setting, <A> to move to the previous setting or <CLR> to exit.

**Units Card Price Setup**

NOTE: Only the prices that apply to the Copier Types selected in Application Setup will appear



U Price Setup  
A or B to Scroll

From the command mode select "U Price Setup" mode with the <A> or <B> keys then press <ENT>

In the "U Price Setup" the following options are accessed by using the <A><B> keys to scroll to the setting change, press <ENT> key to select that setting for editing.

#### Set Price 1

Priceu 1  
1

Set price 1 (0-65.535) with the 0-9 buttons then press <ENT>  
Applies to 2 Price Copier Interface Only

Press <B> to move to the next setting, <A> to move to the previous setting or <CLR> to exit.

#### Set Price 2

Priceu 2  
1

Set price 1 (0-65.535) with the 0-9 buttons then press <ENT>  
Applies to 2 Price Copier Interface Only

Press <B> to move to the next setting, <A> to move to the previous setting or <CLR> to exit.

#### Set Small Black & White Price

Copy Small B&WU  
1

Set price 1 (0-65.535) with the 0-9 buttons then press <ENT>  
Applies to Bizhub Panasonic and Sharp Copier Interface Only

Press <B> to move to the next setting, <A> to move to the previous setting or <CLR> to exit.

#### Set Medium Black & White Price

Copy Med B&WU  
1

Set price 1 (0-65.535) with the 0-9 buttons then press <ENT>  
Applies to Bizhub Panasonic and Sharp Copier Interface Only

Press <B> to move to the next setting, <A> to move to the previous setting or <CLR> to exit.

#### Set Large Black & White Price

Copy Large B&WU  
1

Set price 1 (0-65.535) with the 0-9 buttons then press <ENT>  
Applies to Bizhub Panasonic and Sharp Copier Interface Only

Press <B> to move to the next setting, <A> to move to the previous setting or <CLR> to exit.

#### Set Small Color Price

Copy Small CLRU  
1

Set price 1 (0-65.535) with the 0-9 buttons then press <ENT>  
Applies to Bizhub Panasonic and Sharp Copier Interface Only

Press <B> to move to the next setting, <A> to move to the previous setting or <CLR> to exit.

#### Set Medium Color Price

Copy Med CLR U  
1

Set price 1 (0-65.535) with the 0-9 buttons then press <ENT>  
Applies to Bizhub Panasonic and Sharp Copier Interface Only

Press <B> to move to the next setting, <A> to move to the previous setting or <CLR> to exit.

#### Set Large Color Price

Copy Large CLRU  
1

Set price 1 (0-65.535) with the 0-9 buttons then press <ENT>  
Applies to Bizhub Panasonic and Sharp Copier Interface Only

Press <B> to move to the next setting, <A> to move to the previous setting or <CLR> to exit.



## Discount and Tax Setup

Discount and Tax  
A or B to Scroll

From Command Mode Select "Discount and tax Setup" mode with the <A> or <B> keys then press <ENT>

In "Discount and tax Setup" the following options are accessed by using the <A> or <B> Keys to scroll to the setting to change, press the <ENT> key to save the setting.

### Discount & Tax Information:

Discounts are only applied to Cash Card Debits. Discounts are not applied to Units cards. There is a discount assigned to each Card Profile or Card Site Code.

Taxes are only applied to Cash Card Debits. Taxes are not applied to Units Cards. There are 3 taxes that can be set, each with its own minimum value to apply the tax to.

### Discounts to Apply to Card Sites

Site # Discount%  
0

Enter the Discount amount (0-100) with the 0-9 Buttons followed by the <ENT>

Press <B> to move to the next setting, <A> to move to the previous setting or <CLR> to exit.

Discounts are assigned for each of the sites 1-5

### Set Tax Rate 1

Tax Rate 1 %  
0.00

Enter the tax rate (0.00-99.99) with the 0-9 Buttons followed by the <ENT>

Press <B> to move to the next setting, <A> to move to the previous setting or <CLR> to exit.

### Set Tax Rate 2

Tax Rate 2 %  
0.00

Enter the tax rate (0.00-99.99) with the 0-9 Buttons followed by the <ENT>

Press <B> to move to the next setting, <A> to move to the previous setting or <CLR> to exit.

### Set Tax Rate 3

Tax Rate 3 %  
0.00

Enter the tax rate (0.00-99.99) with the 0-9 Buttons followed by the <ENT>

Press <B> to move to the next setting, <A> to move to the previous setting or <CLR> to exit.

### Set Apply Tax Rate 1 to Copiers

Apply Tax 1 Copy  
No

Select Yes or No with the A or B buttons followed by <ENT>

Press <B> to move to the next setting, <A> to move to the previous setting or <CLR> to exit.

### Set Apply Tax Rate 2 to Copiers

Apply Tax 2 Copy  
No

Select Yes or No with the A or B buttons followed by <ENT>

Press <B> to move to the next setting, <A> to move to the previous setting or <CLR> to exit.

### Set Apply Tax Rate 3 to Copiers

Apply Tax 3 Copy

Select Yes or No with the A or B buttons followed by <ENT>



No

Press <B> to move to the next setting, <A> to move to the previous setting or <CLR> to exit.

#### Set Minimum Taxable Value for Tax 1

Min Tax 1  
No

Enter the minimum taxable amount with the 0-9 buttons followed by <ENT>

Press <B> to move to the next setting, <A> to move to the previous setting or <CLR> to exit.

#### Set Minimum Taxable Value for Tax 2

Min Tax 2  
No

Enter the minimum taxable amount with the 0-9 buttons followed by <ENT>

Press <B> to move to the next setting, <A> to move to the previous setting or <CLR> to exit.

#### Set Minimum Taxable Value for Tax 3

Min Tax 3  
No

Enter the minimum taxable amount with the 0-9 buttons followed by <ENT>

Press <B> to move to the next setting, <A> to move to the previous setting or <CLR> to exit.

### Communication Setup Mode

Comm Setup  
A or B to Scroll

From Command Mode Select "Comm Setup" mode with the <A> or <B> Keys then press <ENT>

In "Communication Setup" the following options are accessed by using the <A> or <B> keys to scroll to the setting to change, then press <ENT> to save the setting.

#### Set USB Baud Rate

Baud Rate USB  
9600

Select the Baud Rate with the <A> or <B> buttons then press <ENT>

Press <B> to move to the next setting, <A> to move to the previous setting or <CLR> to exit.

#### Set USB Parity condition

Parity USB  
none

Select None, Odd or Even with the <A> or <B> buttons then press <ENT>

Press <B> to move to the next setting, <A> to move to the previous setting or <CLR> to exit.

#### Set USB number of Data Bits

Data bits USB  
8

Select 7 or 8 with the <A> or <B> buttons then press <ENT>

Press <B> to move to the next setting, <A> to move to the previous setting or <CLR> to exit.

#### Set COM 1 Baud Rate

Baud Rate COM1  
9600

Select the Baud Rate with the <A> or <B> buttons then press <ENT>

Press <B> to move to the next setting, <A> to move to the previous setting or <CLR> to exit.

#### Set COM1 Parity condition



Parity COM1  
None

Select None, Odd or Even with the <A> or <B> buttons then press <ENT>

Press <B> to move to the next setting, <A> to move to the previous setting or <CLR> to exit.

### Set COM1 number of Data Bits

Data bits COM1  
8

Select 7 or 8 with the <A> or <B> buttons then press <ENT>

Press <B> to move to the next setting, <A> to move to the previous setting or <CLR> to exit.

## Copier Interface Setup Mode

Copier Interface  
A or B to Scroll

From Command Mode Select "Copier Interface" mode with the <A> or <B> then press <ENT>

In "Copier Interface" mode the following options are accessed by using the <A> or <B> keys to scroll to the setting to change, press <ENT> to save the setting.

### Set Line 2 Mode

Line 2 Mode  
Pulse

set the Pulse or Level with the <A> or <B> buttons then press <ENT>

If this menu does not apply to the copier interface type selected in the application setup it will not appear.

When Pulse is selected each pulse is deducted on input 2 is counted as a Price 2 Copy

When Level is selected each pulse on input 1 is counted as a Price 2 if input 2 is active during the pulse (like the shift key on a keyboard)

Press <B> to move to the next setting, <A> to move to the previous setting or <CLR> to exit.

### Set Pulse Time

Pulse Time  
50 ms

Enter the pulse time in milliseconds with the 0-9 buttons followed by <ENT>

If this Menu does not apply to the copier interface type selected In the Application Setup, it will not appear

Pulse Time is the minimum amount of time that a terminal must be activated through its deduct circuit to consider a copy to have been made. When "ghost" deductions happen randomly, this setting can often be increased to ignore noise. When copies are not counted at all, the pulse time may have to be lowered as the copier may be supplying a very short signal. Most copiers provide a pulse of at least 50 ms

Press <B> to move to the next setting, <A> to move to the previous setting or <CLR> to exit.

### Set Blind Time

Blind Time  
50 ms

Enter the Blind time (in milliseconds) with the 0-9 buttons followed by <ENT>

If this Menu does not apply to the copier interface type selected In the Application Setup, it will not appear

Blind is the time between deduct pulses that the controller ignores the deduct signal. This can be used to block out "relay bounce" from the copier or when the copier gives 2 or more pulses close together per page printed. Be careful that the blind time is not set too high as this would "ignore" the pulse from the next page. To test run a 5-page job. If less than 5 pages deduct DECREASE the blind time. If more than 5 pages deduct then INCREASE the blind time. This test should be repeated for all



paper sizes available to ensure proper timing.

Press **<B>** to move to the next setting, **<A>** to move to the previous setting or **<CLR>** to exit.

**Set Delay Disable Time**

Dly Disable, msec 1000
---------------------------

Enter the Delay Disable time (in milliseconds) with the 0-9 buttons followed by **<ENT>**

If this Menu does not apply to the copier interface type selected In the Application Setup, it will not appear

Delay Disable is the time between pressing the clear button and the opening of the Enable relay. On some copiers, if the enable is opened mid-cycle, the paper will jam inside the copier.

Press **<B>** to move to the next setting, **<A>** to move to the previous setting or **<CLR>** to exit.

**Set Delay Eject Time**

Dly Eject, sec 0
---------------------

Enter the Delay Eject time (in seconds) with the 0-9 buttons followed by **<ENT>**

If this Menu does not apply to the copier interface type selected In the Application Setup, it will not appear

Delay Eject is the time between pressing the clear button and the return of the card. This should be set high enough so that the last copy is deducted before the reader returns the card with the new balance written on it. This can be determined by timing the print cycle from the press of the print button and the copy being displayed on the terminal then add 1 second.

Press **<B>** to move to the next setting, **<A>** to move to the previous setting or **<CLR>** to exit.

**Set Auto Eject Time**

Auto Eject, sec 0
----------------------

Enter the Auto Eject time (in seconds) with the 0-9 buttons followed by **<ENT>**

If this Menu does not apply to the copier interface type selected In the Application Setup, it will not appear

Delay Disable is the time between the last count pulse received by the reader and the time at which the reader will automatically return the card with the updated balance; disabling the copier. The Auto Eject countdown is reset each time a copy is made.

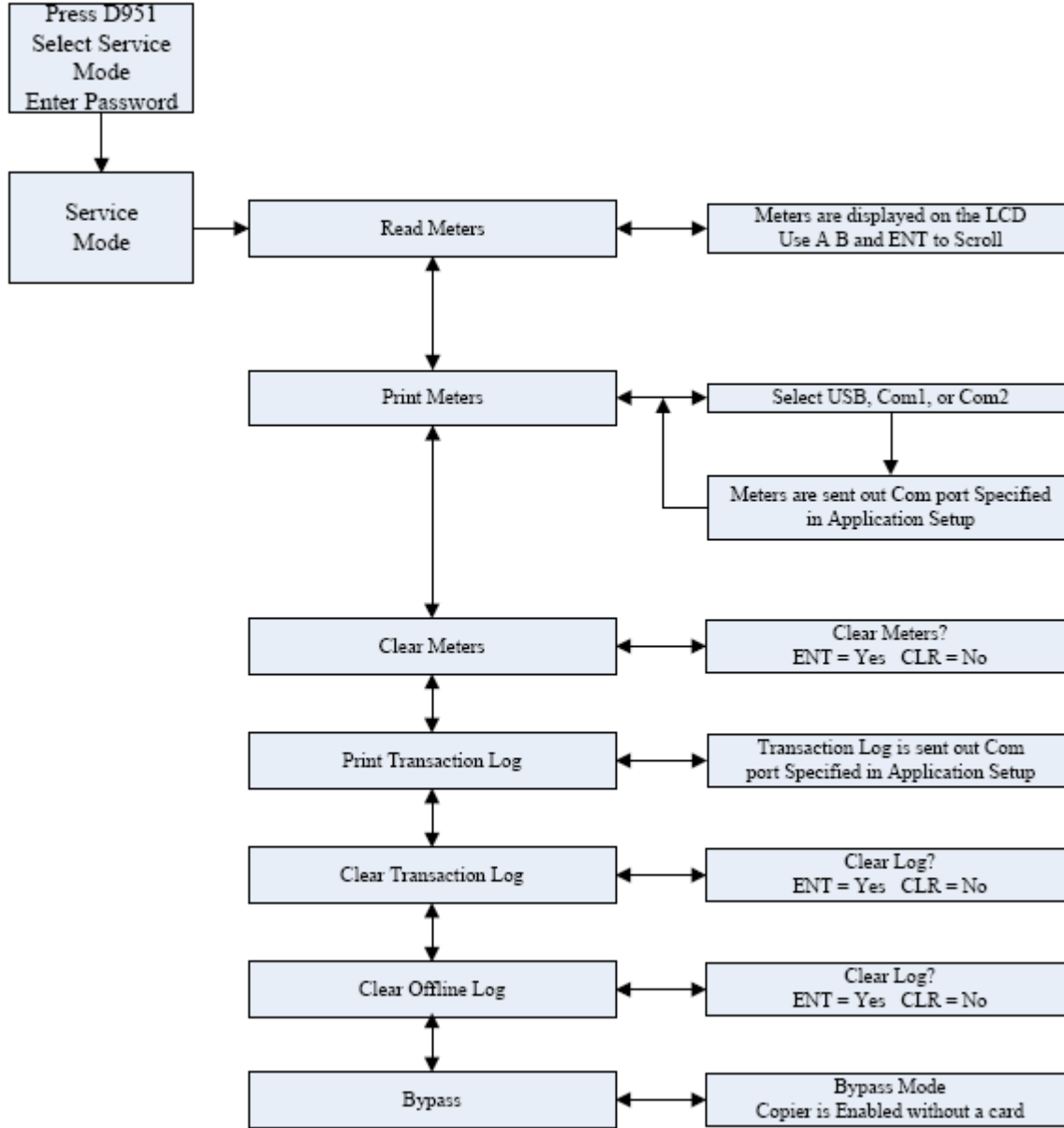
Press **<B>** to move to the next setting, **<A>** to move to the previous setting or **<CLR>** to exit.



## Service Mode

Service Mode is used to access meters and logs that record the transaction details.

### Service Mode Overview



### To Access the Service Mode

At the Idle prompt:

Please Insert Card

Press <CLR> <D> <9> <5> <1> <ENT>

Mode Selection:  
Service Mode

On the keypad Use <A> or <B> to select "Service Mode" then Press <ENT>





Default Mode Password is – 1501

Password: _
----------------

At the password prompt, press <1> <5> <0> <1> <ENT> on the keypad.

**Read Meters on the LCD**

Service Read Meters
------------------------

Press <ENT> to view the Meters on the LCD Display

Scroll through the meters with the <A> or <B> buttons. Press <CLR> to exit the read meters.

**LCD Meters GoPrint Format:**

Note some meters will vary with copier type and other interfaces in use.

Label	Description
Total.CDebits	Total Cash Debited from All cards Including Tax
Total.UDebits	Total Units Debited from All cards
Enc. Num \$	Number of Cash cards encoded through encoding mode
Enc. Amt \$	Total value Cash cards encoded through encoding mode
Enc. Num U	Number of Units cards encoded through encoding mode
Enc. Amt U	Total value Units cards encoded through encoding mode
Total.Site1 \$	Total value Debited from Site 1 Cash Cards
Total.Site2 \$	Total value Debited from Site 2 Cash Cards
Total.Site3 \$	Total value Debited from Site 3 Cash Cards
Total.Site1 U	Total value Debited from Site 1 Units Cards
Total.Site2 U	Total value Debited from Site 2 Units Cards
Total.Site3 U	Total value Debited from Site 3 Units Cards
GT.CDebits	Grand Total Cash Debited from All cards Including Tax
GT.UDebits	Grand Total Units Debited from All cards
GT.Enc.Num.\$	Grand Number of Cash cards encoded through encoding mode
GT.Enc.Amt.\$	Grand Total value Cash cards encoded through encoding mode
GT.Enc.Num.U	Grand Number of Units cards encoded through encoding mode
GT.Enc.Amt.U	Grand Total value Units cards encoded through encoding mode
GTTotal.site1 \$	Grand Total value Debited from Site 1 Cash Cards
GTTotal.site2 \$	Grand Total value Debited from Site 2



	Cash Cards
GTotal.site3 \$	Grand Total value Debited from Site 3 Cash Cards
GTotal.site1 U	Grand Total value Debited from Site 1 Units Cards
GTotal.site2 U	Grand Total value Debited from Site 2 Units Cards
GTotal.site3 U	Grand Total value Debited from Site 3 Units Cards

**Print Meters through COM Port**

Service  
Print Meters

Press <ENT> to Select Print Meters mode

Before printing (sending) meters be sure to connect the printer or data collection device to the appropriate COM port on the rear of the 1500 reader.

Send to? 0=USB  
1=Com1 2=Com2

Select the Com Port with 0, 1 or 2 then Press <ENT> to send the meters out to that port.

**Meters Report Legacy Format**

Upon Selecting Print Meters from Service mode the above meters are sent out to the serial port. It is formatted to print a report 37 characters wide as shown in the example below:

Note that some meters will vary with copier type and other interfaces in use.

*****	
Model 1500 Term ID 1 08/05/28 14:35:40 RESETTABLE Meters Cash debits site 1 Total \$ 0.000 Cash debits site 2 Total \$ 0.000 Cash debits site 3 Total \$ 0.000 Num Cash copies site 1 0 Num Cash copies site 2 0 Num Cash copies site 3 0 Unit debits site 1 Total 0 Unit debits site 2 Total 0 Unit debits site 3 Total 0 Num Unit copies site 1 0 Num Unit copies site 2 0 Num Unit copies site 3 0 Total CDebits \$ 0.000 Total UDebits 0 # \$Card Encoded 0 Amt \$ Encoded \$ 0.000 # UCard Encoded 0 Amt U Encoded 0	GRAND Meters Grand Cash debits site 1 Grand Total G \$ 0.000 Grand Cash debits site 2 Grand Total G \$ 0.000 Grand Cash debits site 3 Grand Total G \$ 0.000 Grand Num Cash copies site 1 0 Grand Num Cash copies site 2 0 Grand Num Cash copies site 3 0 Grand Unit debits site 1 Grand Total G 0 Grand Unit debits site 2 Grand Total G 0 Grand Unit debits site 3 Grand Total G 0 Grand Num Unit copies site 1 0 Grand Num Unit copies site 2 0 Grand Num Unit copies site 3 0 Grand Total CDebits \$ 0.000 Grand Total UDebits 0 Grand # \$Card Encoded 0 Grand Amt \$ Encoded \$ 0.000 Grand # UCard Encoded 0 Grand Amt U Encoded 0 ***** End of Report *****



### Clear Meters

Service  
Clear Meters

Press <ENT> to Select Clear Meters Mode

Confirm to Clear Meters

Clear Meters?  
ENT=Yes CLR=No

Press <ENT> to Clear Meters, Press <CLR> to leave meters intact

### Print Transaction Log Through Com Port

Does not apply to GoPrint Formats

### Clear Transaction Log

Does not apply to GoPrint Formats

### Bypass Mode

Service  
Bypass

Press <ENT> to enable Bypass Mode

While reader is in bypass mode the copier is “enabled” to allow free copies etc. Press CLR to disable bypass mode

If the power is reset Bypass mode will be automatically disabled.



## GoPrint Legacy Format Command Cards and Use

Some of the Service functions can be achieved by using “command” cards. There are command cards to initiate: Read Meters, Print Meters, Clear Meters, Print Transaction Log, and Encoding cash or units.

Legacy Command cards must be the matching Format, STX and ROM code as set in “Card Setup”

For Command cards to be accepted the “Terminal Setting” “Accept Command cards” must be set to yes.

### Using the Read Meters Command Card

At the Idle prompt

Please Insert  
Card

Insert the Read Meters Card

Scroll through the Meters by re-inserting the card until it stops Press the eject button to exit read meters

### Using the Print Meters Command Card

Before Printing (Sending) meters be sure to connect the printer or data collection device to the appropriate Com port on the rear of the MiniTill.

At the idle prompt

Please Insert  
Card

Insert Print Meters Card

### Using the Clear Meters Command Card

At the Idle prompt

Please Insert  
Card

Press and hold the eject button while inserting the clear meters card to confirm intension to clear meters.

Meters Cleared

If the eject button was held during the entire process the display will indicate that the meters were cleared.

### Using the Encode Cash Command Cards

Insert the encode cash card

Cash \$ ##.##  
Insert user Card

Where the ##.## is the preset value on the encode card

To change the value to encode press the eject button. This will cause the value to increase. To reset back to Zero (when a value less than what is displayed is desired) Insert the card until it stops while holding the eject button. Once the value has returned to 0.00 release the button then remove the card.

Cash \$ ##.##  
Insert user Card

Insert a card to encode. Card encoded is briefly displayed on the LCD

Cash \$ ##.##  
Insert user Card

Insert the other cards for encoding. When finished press the eject button to return to idle mode



## Using the Encode Units Command Cards

Insert the encode Units card

Units ##### Insert user Card
---------------------------------

Where the ##### is the preset value on the encode card

To change the value to encode press the eject button. This will cause the value to increase. To reset back to Zero (when a value less than what is displayed is desired) Insert the card until it stops while holding the eject button. Once the value has returned to 0 release the button then remove the card.

Units ##### Insert user Card
---------------------------------

Insert a card to encode. Card encoded is briefly displayed on the LCD

Units ##### Insert user Card
---------------------------------

Insert the other cards for encoding. When finished press the eject button to return to idle mode



## Card Error Messages

Possible errors generated during card reading and acceptance checking:

<b>Display message</b>	<b>Probable Cause</b>
FLAGGED CARD	Card LRC was inverted, card may have been removed during vending.
Card Over Max	Purse value is greater than Card Setup->max value cash, (or max value units if purse is units)
INVALID TYPE	Card is not either a user, command, or account card. Other types have yet to be defined
Invalid Site	This is only used for old ACT format, card's site does not match any configured site codes
Please try again	The card's LRC check does not match the calculated LRC.
Bad STX or Rom	The card does not match the STX or Rom set in the reader.
Blank Card	No data on the card.
INVALID CARD	Parity or other error. Other non-recognized card formats can generate this error.
Format not accepted	Card is a different format than what is set in Card setup>Format
Insufficient funds	Card value was less then the amount to deduct
Units not accepted	Units cards are disabled in terminal setup.



## Connecting the USB Reader to a GoPrint Release Station:

***\*\*\*Initial instructions are listed on page 5 of this manual, ensure you have done all of the initial steps before configuring the GoPrint Software***

### **Step 1:**

Go to the GoPrint Control Center (Start/Programs/GS4 Control Center), and log in using admin/admin. Click on the Release Station you want to configure

### **Step 2:**

Under Card Reader Tab, change the purse to Default User Class – Value Card. Then for Make/Model select ITC-ITC-1500 for the Driver.

### **Step 3:**

Scroll down until you see the card reader settings.

For Port Settings, make the following changes

- PORT=COM6 (or whatever COM port was listed in the Device Manager)
- Port Settings=9600,N,8,1
- Units=
- UnitID=1

### Installation Instructions:

The 1500 Card Reader may be mounted in any convenient location on, or next to, the controlled machine. Mount the Card reader securely on the machine or on a stand or desk using double stick foam mounting strips, or Hook and Loop strips. The power for the reader is supplied by a Class 2 AC transformer with an 18 VAC output. This transformer should be plugged into a properly wired wall outlet or into a good quality "power bar". Connection to long extension cords, or extension cords connected to other equipment is not recommended as they can cause intermittent connection or voltage drop outs that could affect the operation of the card reader.

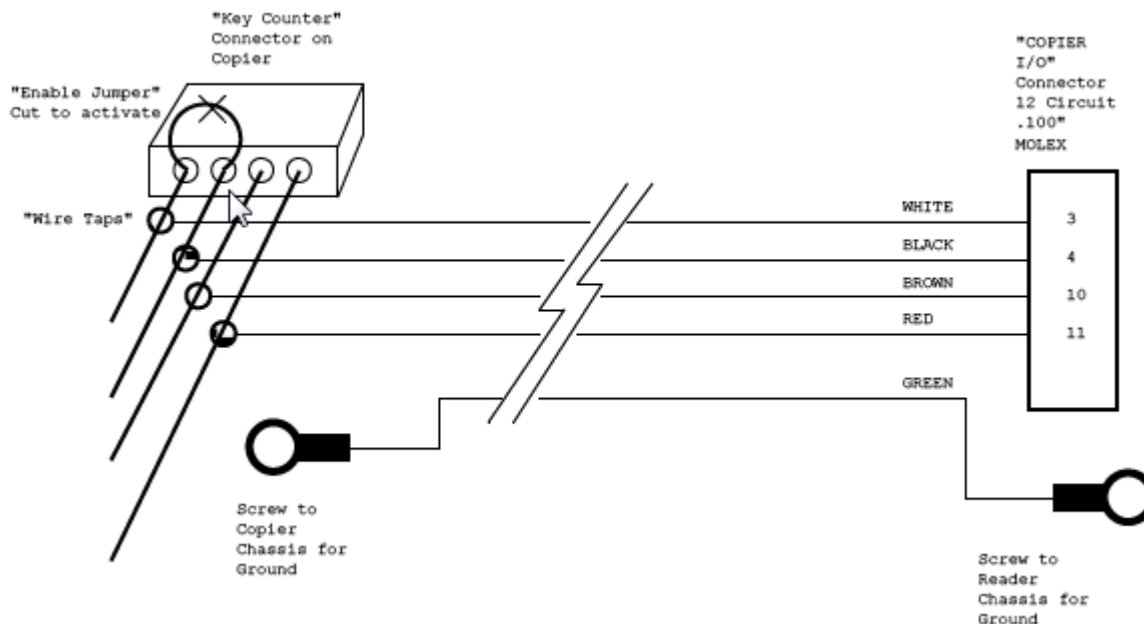
### Connection to Photocopier

The 1500 reader controls the photocopier via a control cable attached to J6 on the underside towards the Left rear corner of the reader. There is an enable circuit and 2 Copy sense circuits. The enable circuit is a set of relay contacts rated at 1/2 Amp up to 30 Volts AC or DC. Switching larger voltages or currents could damage the relay, and cause a safety hazard due to fire. The copy Sense circuits are capable of detecting a signal from 5 to 30 volts AC or DC and are isolated from the rest of the reader's circuitry by Opto-isolators. Some Copier Specific cables and interfaces are available. Contact GoPrint Systems for further information. When using the generic control cable wire taps are typically used to attach to the "Auditron" or "Key Counter" port on the copier.

### Connection to Earth Ground

**IMPORTANT NOTE!** The Green Ground wire on the Copier Harness is connected to the 1500 Chassis. **This wire MUST be connected to the Copier Chassis or other Earth Ground for EMC and ESD shielding.** Failure to connect this wire to Earth Ground could result in Interference with other electronic devices, Operational malfunction, and/or damage to the 1500. If the 1500 is used in an application where it is not connected to a Copier the chassis must still be connected to an earth ground. Contact GoPrint Systems Support department for assistance.

### Typical Key Counter Connection



\* NOTE: This Diagram is for Illustrative purposes only. The circuit positions may not correspond to the copier being installed.





### Control Cable Pin Out

PIN	Color	Function / Description
1		Enable Circuit 2 - Normally Closed Contact
2		Enable Circuit 2 - Common Contact
3	White	Enable Circuit 1 - Common Contact
4	Black	Enable Circuit 1 - Normally Open Contact
5		Enable Circuit 1 - Normally Closed Contact
6	Blue	15V Return (Ground) for copy sense where the copier provides a contact closure instead of a pulse
7	Orange	+15V Out Limited Current for copy sense where the copier provides a contact closure instead of a pulse
8	Yellow	Copy Sense Input 2 Signal (Price 2)
9	Violet	Copy Sense Input 2 Return (Price 2)
10	Brown	Copy Sense Input 1 Signal (Price 1)
11	Red	Copy Sense Input 1 Return (Price 1)
12		UNUSED (No Connect)